

WinTV-HVR-4000 Quick Installation Guide for Windows XP

© 2006 Hauppauge Computer Works · QI-WNTV-HVR4000CYBER-V1.0-ENG · 2006/10/26

Hauppauge Computer Works, Ltd.
10 Borough High Street
Bank Chambers
London, UK, SE1 9QQ
www.hauppauge.co.uk

Hauppauge Computer Works, Inc.
91 Cabot Court
Hauppauge, NY 11788
www.hauppauge.com

Hauppauge Digital Asia, Pte. Ltd.
Blk 1093, Lower Delta Road #04-05
Tiong Bahru Industrial Estate
Singapore 169204
www.hauppauge.com.sg

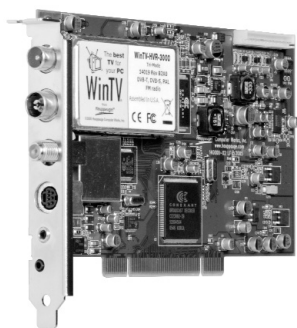
Tech Support: (+44) 0207 378 0202
Telephone: (+44) 0207 378 1997
Fax: (+44) 0207 357 9171

Tech Support: (+1) 631 434 3197
Telephone: (+1) 631 434 1600
Fax: (+1) 631 434 3198

Tech Support: (+65) 276 4412
Telephone: (+65) 276 9163
Fax: (+65) 276 9167

1. Contents of the WinTV-HVR-package

- WinTV-HVR-4000 - PCI-board
- Remote control transmitter with 2 AAA batteries
- Remote control receiver with velcro dot fastener
- FM Radio antenna
- S-Video/Composite Adapter
- Installation CD-ROM with:
 - CyberLink PowerCinema 4.7



2. Installing the WinTV-HVR board

To install, switch off the computer and remove the computer cover. The manufacturer of your PC supplies instructions on removing the PC cover.

Note: Your PC could be damaged by electrostatic discharge. Avoid this by contacting the earthed chassis of your PC, before you open it or touch the PCI card.

- Locate a free PCI slot (a short white slot). Unscrew and remove the meta cover plate which covers the back of the empty slot.
- Plug the WinTV-HVR board into the PCI slot, and screw the WinTV-HVR metal cover plate to the PC.

3. Connections of the WinTV-HVR-4000 board

With the HVR you can watch and record analog TV, DVB-Terrestrial and DVB-Satellite channels. You can also connect sources via the composite and S-Video inputs and listen to FM Radio as well.

You can now connect the leads provided to the WinTV-HVR-4000 in the following order.

FM	FM Radio-Antenna
TV	TV-Antenna
SAT	SAT-Cable from the LNB of your satellite dish
S-VIDEO IN	S-Video-Input *
LINE IN	Stereo-Audio-Input, from the output of your source
IR	Input for the Infra-red-Sensor

Note: for using a RCA Yellow Phono composite input you must use the supplied S-Video to composite adapter.

4. WinTV-HVR-4000 DVB reception advice

DVB-T

Please ensure that you have a suitable TV aerial connected to the WinTV card. You should then ensure you are located in a area that supports Digital Terrestrial TV by visiting:

www.dtg.org.uk/retailer/coverage.html and entering your post code.

If your area does have digital Terrestrial TV coverage, please check your TV antenna as most antenna's that are over 8 years old may not support the Digital Terrestrial TV broadcasts and you may need to update yours to a 'Wideband or Highgain' antenna.

DVB-S

Please ensure that your satellite dish is correctly aligned and the Sat cable is connecty directly from the LNB and not via a set top box.

5. Install the WinTV-HVR Windows XP driver

Note: You may need to disable your antivirus programs during the installation only.

Start your PC. When it is completely booted, the **Add New Hardware Wizard** will appear. Insert the **Hauppauge Installation CD-ROM** into your CD-ROM drive. Click **Next**.

Select **Search for the best driver for your device (Recommended)**. Click **Next**.

Note: If you see a **Hardware Installation box that mentions that the driver is not digitally signed, click the "Continue Anyway" button to continue the installation.**

Once the driver components are installed, click the **Finish** button.

You can check to see if the driver has been installed correctly. Click on **Start / Settings / Control Panel / System / Hardware / Device Manager**.

If you then click on the **Sound Video and Game Controllers** section you should see the eight WinTV-HVR components.

If any of them have a yellow exclamation mark, follow this procedure:

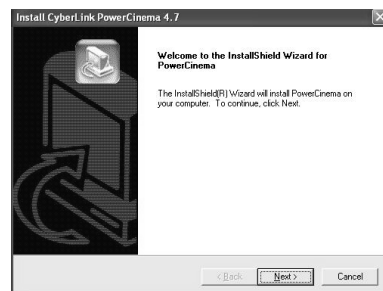
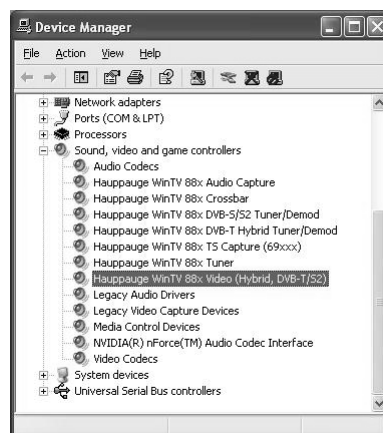
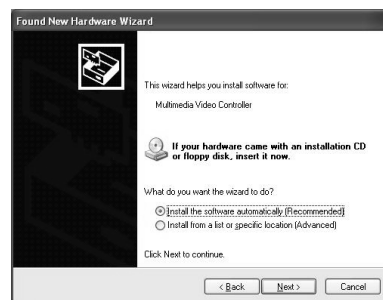
- Close Device Manager
- On the Hauppauge Installation CD-ROM double click on the file called **"HcwDriverInstall"**. The windows "Searching for hardware and updating drivers..." appears. Click on the bar to exit and re-start the computer
- Check again to see if the driver has been installed correctly. If not, please contact our tech support.

6. CyberLink Software Installation

To start the software installation, click **Start / Run** then type your **CD-ROM drive letter** (for example: D:\) and then **Setup.exe**.

Click **Next** and follow the on screen instructions to install the software.

Once the installation is complete, please re-start your computer.



7. CyberLink PowerCinema

To start the PowerCinema application double click on the CyberLink PowerCinema icon on your desktop or click on **Start / All Programs / CyberLink PowerCinema / PowerCinema**.

The Setup Wizard will appear which will guide you through the setup and configuration of the application, click **Next**.

Select the type of screen that you are using (4:3 is normal TV / Monitor screen size and 16:9 is a widescreen TV / Monitor) and click **Next**.

Select the type of speaker setup that you are using and click **Next**.

The WinTV-HVR-4000 has a Hybrid tuner and can be configured for all 4 types of signals: Analogue (Cable TV), DVB-T, DVB-S / HD DVB-S2.

You need to ensure that you have connected the cables correctly before performing a channel scan.

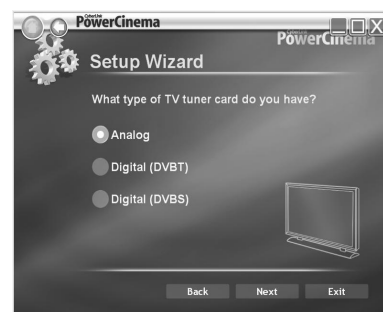
This section will explain how to scan in analog, digital DVB-T and digital DVB-S.

You can configure a signal input by selecting **Settings / TV / Signal settings**.

Analog TV Setup

Select if you are using a Cable or Antenna signal and click **Next**.

Select the region that you are located in and click **Next**.



Click on **Autoscan for TV Channels Now** to start searching for TV channels. During the channel scan the TV pictures will briefly appear.

Once the channel scan is finished click on **Complete**.

Digital DVB-T Setup

Select **Digital (DVB-T)** and click **Next**.

Select the **region** that you are located in and click **Next**.

Click on **Autoscan for TV Channels Now** to start searching for TV channels. During the channel scan the TV pictures will briefly appear.

Once the channel scan is finished click on **Complete**.

Digital DVB-S/DVB-S2 TV Setup
Select **Digital (DVBS)** and click **Next**.



Select the region that you are located in and click **Next**.



Select the number of satellites that you are using. In most situations there will only be 1 satellite position, as your satellite dish will only have 1 LNB.



Select the satellite that your dish is pointing to from the satellite list. In the United Kingdom the 2 most common satellite positions are:

Astra 2A, 2B, 2D (E28)
Astra 1C, 1E, 1F, 1G, 1H, 2C (E19)
For a SKY satellite dish position select the Astra 2A, 2B, 2D (E28) and select **Next**.



Click on **Autoscan for TV Channels Now** to start searching for TV channels. During the channel scan the TV pictures will briefly appear.



Once the channel scan is finished click on **Complete**.



Electronic Program Guide
The EPG shows you what's on TV for up to 2 weeks in advance. You can use the EPG to schedule recordings while you are not sitting at the PC.

Click on more information about EPG.

There are 2 options for receiving the EPG data:
Using a pay service epgData.com
Using a free service NexTVView
Select the **NexTVView** option and click **Next**.



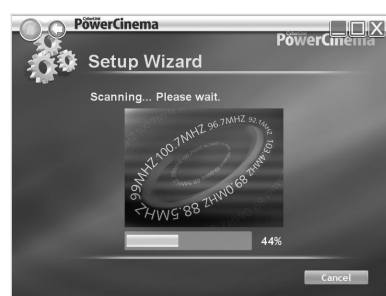
Select the folder on your computer where the TV recordings will be stored.



You can search for FM Radio stations.



When the scanning is finished click on **Complete**.



Select the folder on your computer where the FM Radio recordings will be stored.



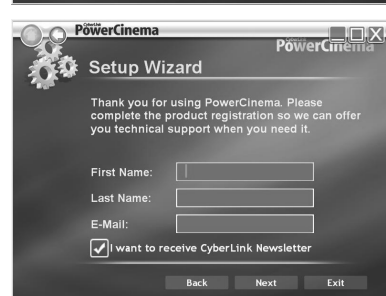
You can search for music that is already stored on your computer which will add it to a play list.



When the searching is finished click on **Complete**.



The setup wizard is now complete, click **Next** to finish.



Note: CyberLink PowerCinema is a function-rich Media center software. You can use it for the playing of music, video, DVD's and TV shows. Please refer the user manual, which you find on the CD-ROM in electronic form.

8. Installing the Remote Control software

The remote control software is installed automatically during the installation of the WinTV applications.

You will see the WinTV Remote icon in the Device Tray. The installation will add a shortcut to **IR.EXE** to the Startup group, so that **IR.EXE** is loaded every time after Windows has booted.

If you need to restart the remote control, select **Restart IR** from the **Start \ All Program Files \ WinTV directory**.

Please ensure the following before trying to use this option:

1. Infrared Remote control - Has batteries inserted
2. Infrared-Receiver, is fully connected to the IR socket of the WinTV-Card
3. Infrared software is started - The IR icon is on the start bar

To start the PowerCinema press the **GO** button. Use the scroll up and down button to select PowerCinema and press **OK** to select.

Button of the Remote control

Button	Function
Go:	Open PowerCinema
Power:	Close PowerCinema
TV:	Display TV Menu
Videos:	Display Video Menu
Music:	Display Music Menu
Pictures:	Display Pictures Menu
Guide:	Display EPG program guide (If configured)
Radio:	Display Radio menu
OK:	Confirm selection
Back/Exit:	Exit the Menu
Menu:	No function
Vol:	Volume up/down
Prev. Ch:	Select the previous channel
Mute:	Sound on/off
Ch:	Select the next channel
REC:	Start a recording
Stop:	Stop a recording; Exit pause mode
<<:	Rewind
Play:	Start playing
>>:	Forward
Pause:	Start Pause-Mode (Timeshift)
Skip:	Skip ahead (x2/x 4/x8)
0-9:	Channel number
text (*):	Display teletext pages
Sub/CC:	Display sub-titles (If available)
Color Keys:	These keys related to the options available on the teletext page that you have selected.



9. Troubleshooting

To uninstall the Driver and Software

To uninstall the software simply run the hcwclear.exe off theHauppauge installation CD-ROM and select the last 1 option and the entry "search all INF files etc". If you now select "OK" a black screen will briefly appear and once it has disappeared the software will be removed. If you now re-start the computer you will be at Step 5 on page 2 of this document and can now re-install the software.

"Error code 10" during installation

This is caused by a failure to load the WinTV-HVR-4000 drivers. Uninstall the software (as above) and then follow the instructions from page 3. If this still gives you an error message move the WinTV-HVR-4000 to a different PCI slot and re-install the drivers again.

Only some channels are found during DVB-T channel scan

Ensure that your antenna is capable of receiving Digital terrestrial transmission (Most rooftop/loft antenna under 8 years old may work). You can enter your postcode at this website address: www.dtg.org.uk/retailer/coverage.html as this will show you what services are available in your area. You can then enter your postcode at this website: www.bbc.co.uk/reception/transmitters/today.shtml to see if there is any engineering work being carried out on your transmitter as this could affect the reception of some channels.

FCC Statement

Radio Interference Statement:

The WinTV boards have been tested and found to comply with the limits for a Class B digital device, pursuant to part 15 of the FCC Rules. These limits are designed to provide reasonable protection against harmful interference in a residential installation. This equipment generates, uses, and can radiate radio frequency energy and cause harmful interference to radio communications. However, there is no guarantee that interference will not occur in a particular installation. If this equipment does cause harmful interference to radio or television reception, which can be determined by turning the equipment off and on, the user is encouraged to try to correct the interference by one or more of the following measures:

- reorient or relocate the receiving antenna.
- increase the separation between the equipment and receiver.
- connect the equipment into an outlet on a circuit different from that to which the receiver is connected.
- consult the dealer or an experienced radio/TV technician for help.

FCC ID: H90WINTV

CAUTION: Changes or modifications not expressly approved by the party responsible for compliance to the FCC Rules could void the user's authority to operate the equipment.

CE Statement: This equipment has been tested and complies with EN 55013, EN 55020 and IEC 801-3 part 3 standards.

Waste Electrical and Electronic Equipment (WEEE)

The device may not be disposed of with household rubbish. This appliance is labeled in accordance with European Directive 2002/96/EG concerning used electrical and electronic appliances (Waste Electrical and Electronic Equipment - WEEE). The guideline determines the framework for the return and recycling of used appliances as applicable throughout the EU. To return your used device, please use the return and collection systems available to you.