

WinTV-NOVA-TD dual tuner Quick Installation Guide

© 2008 Hauppauge Computer Works - Qi-NOVA-TD-V2.0-ENG - 2008/02/05

Hauppauge Computer Works, Ltd.
10 Borough High Street
Bank Chambers
London, UK, SE1 9QQ
www.hauppauge.co.uk

Tech Support: (+44) 0207 378 0202
Telephone: (+44) 0207 378 1997
Fax: (+44) 0207 357 9171
support@hauppauge.co.uk

Hauppauge Computer Works, Inc.
91 Cabot Court
Hauppauge, NY 11788
www.hauppauge.com

Tech Support: (+1) 631 434 3197
Telephone: (+1) 631 434 1600
Fax: (+1) 631 434 3198

Hauppauge Digital Asia, Pte. Ltd.
Blk 1093, Lower Delta Road #04-05
Tiong Bahru Industrial Estate
Singapore 169204
www.hauppauge.com.sg

Tech Support: (+65) 276 4412
Telephone: (+65) 276 9163
Fax: (+65) 276 9167

Included in this package

- WinTV-NOVA-TD unit
- USB extension cable
- TV antenna with IEC connector
- TV antenna with MCX connector
- Aerial 'Y' splitter
- Remote control
- Installations CD-ROM with:
 - WinTV Application
 - WinTV Utilities
- This installation guide

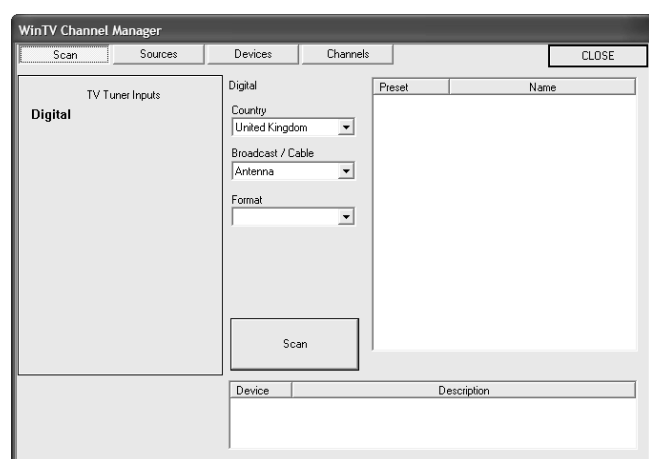
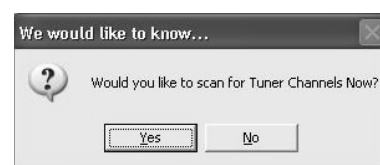


Page 1

4. New WinTV®v6 Application

To start the WinTV application double click on the WinTV icon.

When you run WinTV for the first time, a message will appear asking you to scan for tuner channels now; please ensure that the TV antenna is connected, click YES.



Select your country location, for instance, select United Kingdom and then, select Scan.

The scanning process for DVB-T will scan from channels. When a DVB-T channel is found, the **Signal Status** will show a quality level and the **locked box** will be checked. The DVB-T digital channels that are found will appear in the channel listing box.

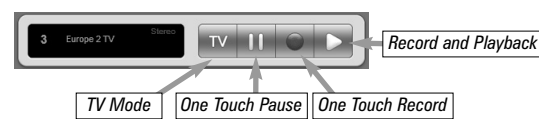
Note: If you have attached an antenna and do not receive any digital TV channels, either use a stronger antenna (a roof top antenna is recommended for best reception) or try to add a TV channel manually.

Click Close when finished.

Page 5

Record and Pause

There are three buttons to control the watching, recording and pausing of TV. Clicking on the **Pause** button will cause the Pause menu to roll down from the WinTV application, while clicking on the **Record** button will cause the Record menu to roll down.



The **One Touch Pause** button prepares the WinTV pausing live video. The **One Touch Record (OTR)** button will start a record session. If you click OTR more than once, a record timer will be set and the recording will be done for 15 minutes for each time the OTR button is clicked. For example, if you click the button 3 times, the WinTV will record for 30 minutes.

Click on the **One Touch Record** button on the WinTV application to open the Record and Playback control bar.

One Touch Record



Clicking the **Record** button will automatically generate a file name and start recording your audio/video program.

Functions:

- When recording TV, the record button will be depressed
- A time counter will be shown indicating the length of time of the recording

If you click **Stop** the time counter will revert back to 00:00:00. The time is specified in a **Hour:Minute:Second** format.

Stop
Clicking the **Stop** button will stop the video you are recording or playing back.

Play
Clicking the **Play** button will playback from disk the last video file created. When playing a video, you can rewind, fast forward, replay 10 sec or skip forward 10 sec using the buttons on the control bar.

Page 9

1. Connecting the WinTV-NOVA-TD

Please ensure that Windows XP or Windows Vista is correctly installed and started before connecting the WinTV-NOVA-TD Stick to your computer's USB 2.0 port. Due to power and bandwidth requirements, we do not recommend connecting the unit into a USB Hub. To install, locate a free USB 2.0 port (normally located at the side or back on the computer). Plug the WinTV-NOVA-TD stick into the USB 2.0 port. You can use a USB extension cable to locate the WinTV-NOVA-TD a short distance from the USB slot.

Note: if you plug the device into a different USB socket, you will need to reinstall the WinTV-NOVA-TD driver, but you will not need to reload any WinTV applications.

2. Connecting the Aerial

It is recommended to connect to a roof top aerial during the first time installation as this may provide a better signal quality than the provided portable antenna. You will need to ensure that you are located in an area that has Digital Terrestrial coverage. Please visit www.dtg.org.uk/retailer/coverage.html

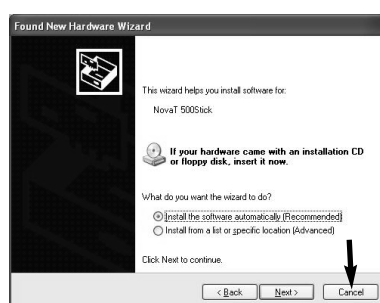
The WinTV-NOVA-TD adopts the revolutionary Diversity technology which enormously improves mobile reception sensitivity when used with indoor antenna reception or while on the move.



3. Install the WinTV Drivers and Applications

Note: If you have any anti-virus software enabled, please disable it during the installation of the software.

When you attach the WinTV-NOVA, the **Found New Hardware Wizard** will appear. Click on **Cancel**.

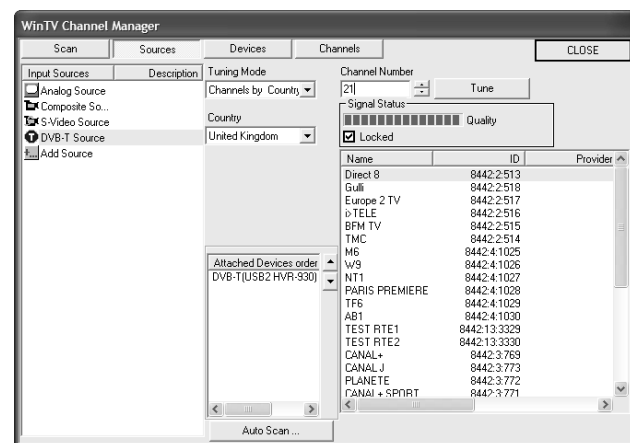


Page 2

Adding a TV channel manually

If the scan did not succeed, you can add a channel manually by entering the LCN number for your local transmitter. Enter your post code in this link: www.wolfbane.com/cgi-bin/tvd.exe? (or the web site about DVB-T of your country) to be presented with the local transmitters. You need to write down the LCN numbers.

In the **WinTV Channel Manager**, click on **Sources** and **DVB-T Source**, enter the LCN numbers into the space under **Channel Number** and click on the **Tune** button. The channel will be added only if the **locked box** is checked after clicking **Tune**. If necessary, reposition your portable antenna, for example near a window, to increase the reception quality.

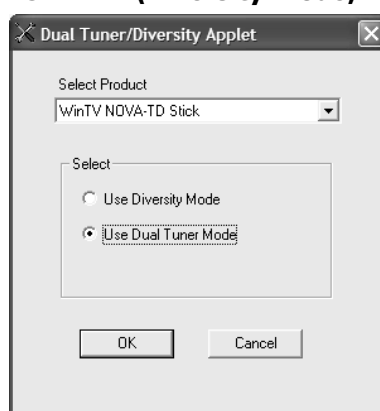


Diversity Tool

Increase reception on WinTV-NOVA-TD (Diversity mode)

You can use WinTV-NOVA-TD in Diversity mode, this increase the reception by using the two tuners to create one clear signal.

For this, click on **Start / All programs / Hauppauge WinTV** and Diversity Tool and select **Use in Diversity Mode**. This disables the Dual Tuner function. Click **OK** and restart your computer for your changes to take effect.



Page 6

Pause

Clicking the **Pause** button while Playing will pause your audio/video.

Rewind

Clicking the **Rewind** button will play the video file in reverse. Clicking the **Rewind** button again will continue the playing of the video.

Fast Forward

Clicking the **Fast Forward** button one time will fast forward your video at 2X speed. Clicking the **Fast Forward** button two times will fast forward your video at 8X speed. Clicking the button again will continue playing back at normal speed.

Slow Motion

Clicking the **Slow Motion** button during playback will cause the video to play in slow motion (at 1/2 speed). Clicking the **Slow Motion** button again will return the video to normal playback speed.

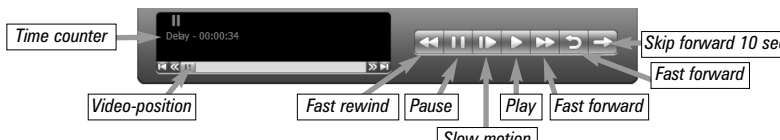
File button

Clicking the **File** button opens the **File** menu. The last file recorded is listed in the **File** name box. In the **File** menu you can:

- **Rename your recorded video file:** To rename a video file, find the file you would like to rename, highlight it with your mouse, and click and hold the right mouse button. Go down to **Rename** and then you can type in a new name. Remember: you must keep the MPG extension on the file.
- **Play a video file previously recorded:** Find the file you would like to play, highlight it with your mouse (one click of the mouse button) and click **Open**. Then click the **Play** button.
- **Delete recorded video files which you no longer want:** Click your right mouse button on the video file once, go down the menu and click **Delete**.

One Touch Pause

The pause mode allow you to pause the Live TV picture and allows you to use the TimeShift function to rewind and fast forward the TV. Clicking the **Pause** button on the WinTV application starts the **Pause mode**. The **Pause** Menu will drop down.



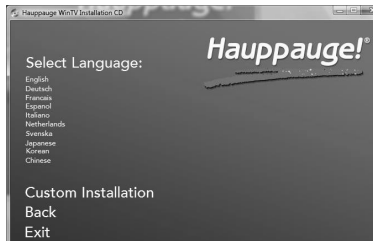
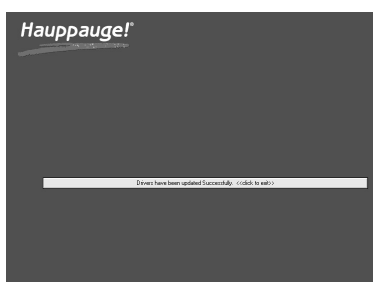
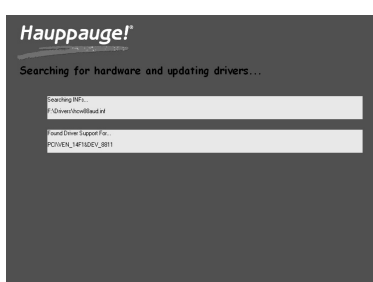
Page 10

Insert your WinTV Installation CD-ROM, the installation window will automatically appear.

Note: If the autorun does not start, browse to the files on the disc and double click on the file called 'Setup'.

In the installation window click on **Step 1: Install WinTV Drivers**.

A blue screen will open which will begin installing and updating the drivers for your product.



Page 3

Once complete, a message appears in the bar. If this message is **Drivers have been updated Successfully**, click on the bar to exit. If the message reports an error, check the connection of your WinTV, or contact our technical support.

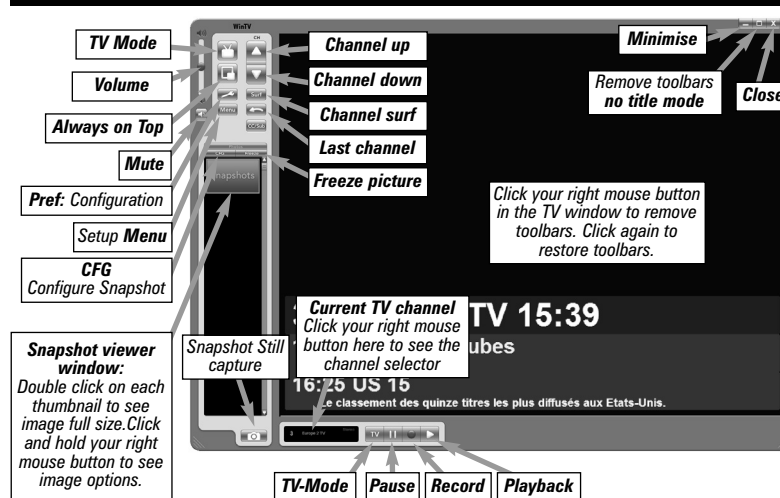
Next, click on **Step 2: Install WinTV** and select your language from the list. The setup window should appear and begin to automatically install the WinTV applications.

Place the antenna in a suitable location, when you receive at least one channel, go to the WinTV channel manager, click on **Sources** and **DVB-T source**, to see **Signal Status**.

Unplug one of the antennas and move the other one to have the best quality level in **Signal Status**. Unplug this antenna and plug in the other one to now optimize this antenna. Antennas must be a slight distant apart for best result.

The minimum signal level to engage the Diversity mode is just 3 blocks on each antenna. When plugging the two antennas, the quality level should then increase.

Watch TV



Changing channels

You can change channels by using the **Channel Up** or **Channel Down** buttons on the WinTV. You can type a channel number (for example: 27) and WinTV will tune to that channel. If the entered channel does not exist, you will see a black window.

You can also right click in the **Current TV channel** box, where you will see a list of channels. Or type letters (for example: BBC) to access to the list of the channels including these letters.

Page 7

Pause Buffer

The **Pause buffer** is space on your hard disk where video is stored during the **Pause** mode. The maximum amount of time which your TV program can be delayed is dependent upon how much storage space you have set for the **Pause buffer**.

Clicking the **Pause** button makes WinTV to start recording into WinTV's **Replay Buffer**. It takes about 10 seconds for the **Replay Buffer** to be initialized and for **Pause** to become effective.

Unclicking the **Pause** button will cause the audio/video program to start playing from the point where the button was originally pushed. Most WinTV functions are active while in the **Pause** or **Pause Live** mode. For example, you can change volume, resize the TV window, go into "no-title mode", etc.

While in **Pause** mode, the **Video Position** bar shows the amount of the **Replay Buffer** which is filled with video. For example, if the **Video Position** indicator shows halfway, it means that half of the **Replay Buffer** is filled. If you find you cannot **Pause** as many minutes as you would like, increase the size of the **Replay Buffer**.

While in **Pause** mode, the A/V stream is always saved in the **Replay Buffer**. To stop saving the A/V stream in the **Replay Buffer**, you must exit the **Pause** mode by clicking **TV mode**.

Replay

While in the **Pause** mode, hitting the **Replay** button acts like the **Instant Replay** you see on TV broadcast sporting events: the audio/video goes back in time and you repeat what you have previously seen. Each click of the **Replay** button causes audio/video to go back 10 seconds. For example, if you want to repeat the audio/video you saw 10 seconds ago, you would click the **Replay** button once. If you want to see the video you saw one minute ago, you would need to click the **Replay** button six times.

For extended replay times, you might find it more convenient to grab the **Video Position** indicator control bar and move it to the left. Once you let the control bar go, audio/video starts to play (it might take a few seconds for the WinTV application to start playing).

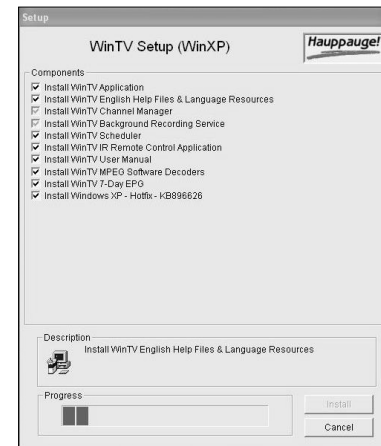
You might have to move the **Video Position** indicator to the left and right to find the desired spot to start replaying audio/video.

While **Replaying**, your audio/video program continues to be recorded in the **Replay Buffer**. Therefore, if you have clicked the **Replay** button 3 times (so that you are replaying the audio/video seen 30 seconds ago), the video you see in the WinTV window will be 30 seconds behind the live program.

Page 11

Note: During the installation, other installation wizards may open, we recommend following the instructions in each of these and installing with the default options available.

Note: For advanced users you can select the 'Custom Installation' which will allow you to modify the list of applications that are installed by default.



Once the WinTV installation is complete, click **OK** then **Exit** in the window "Hauppauge WinTV Installation CD". You should now be back at your Windows desktop.

Page 4

TV Mode

When you click the **Full screen TV** button, TV will appear full screen on your PC monitor. When finished watching TV full screen, click your right mouse button in the TV window. If you see video with a black box around it, click the **Pref** button then click **TV mode** tab. Check the box which says "Allow resolution change".

"Always on top" Mode

Will always be visible on your Windows desktop on top any applications. To turn on, click the **Always on top** button. It will turn green. To turn off, click this button again. A convenient way to use **Always-on-top** is to make the TV window in the no-title mode small, and to make the TV window in the title mode larger. Then you can switch from a small window to a larger one by clicking the right mouse button.

Pref button

Click the **Pref** button to open the preferences menu: **View:** These are the settings for the On Screen Display of the TV channel and Audio Volume, when you can enable **Close Captions** (if supported in your system configuration), plus controls for the **Toolbar** mode (Title mode), **NoToolbar** mode (No Title) and **Full Screen** (TV mode).

Movies: Here is where you configure some video and audio settings. You can set the movie record directory (DVCR Record File Path).

Snapshot: Set the size of your captured images, plus single or two field captures for capturing motion or still image video.

Audio: Your audio settings are configured here.

Menu Button

Click the **Menu** button to open the TV setup menu. Here is the main control bar for TV channels, and duplicate controls for other functions: **Suite-Manager:** Configure the TV tuner (scanning, naming, channel pre set, etc..) and setting up favourite channel lists.

Configuration: Duplicate configuration menus for colour, audio, etc.

View: For settings an exact TV window size: 320x240, 640x480 etc.

Page 8

Skip Ahead

Clicking the **Skip** button will skip the video ahead 10 seconds.

Rewind

Clicking the **Rewind** button while playing video will rewind the recorded video. Clicking the **Rewind** button again will continue the playing.

Slow Motion

Clicking the **Slow Motion** button while playing video will play in **Slow Motion**. Clicking the **Slow Motion** button again, will continue playing normally.

Fast Forward

Clicking the **Fast Forward** button one time will fast forward your video at 2X speed. Clicking the **Fast Forward** button two times will fast forward your video at 8X speed.

Keyboard shortcuts

Sound up - Page Up
Sound down - Page Down
Plus (+) - Channel Up
Minus (-) - Channel Down
Ctrl T - Frame TV
Ctrl P - Frame Print

Ctrl F - Still image
Ctrl M - Default settings
Alt M - Re-size TV menu
0-9 - Channel number
Space bar - Take a Snapshot

Page 12

5. WinTV-Scheduler

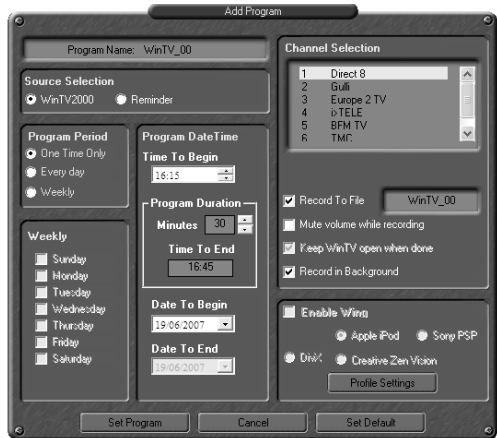
WinTV-Scheduler allows you to schedule the recording of TV shows. WinTV-Scheduler, once it is set, can be closed, and the WinTV application will "wake up" at the desired time and tuned to the desired channel. After installation, WinTV-Scheduler can be found by going to **Start / Program files / Hauppauge WinTV**.

To set up an event for timed watching or recording, click on the **Add Program**.



WinTV-Scheduler works by using the Windows Task Scheduler to launch WinTV at the chosen time. WinTV-Scheduler sets up a command line in Task Scheduler to run WinTV, specifying a TV channel and a length of time to record.

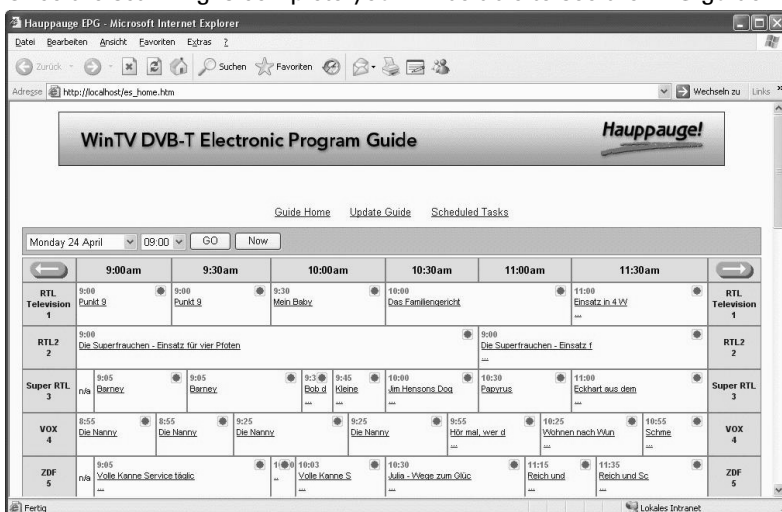
Note: You cannot access the Wing settings until you have purchased the optional transcoder software, for more information see www.hauppauge.com/wing. Please refer to the WING manual for information on using the Wing settings.



The background recorder (BG recorder) allows you to record your program with out the WinTV application present on your desktop.

Page 13

Once the scanning is complete you will be able to see the EPG guide:



4. Scheduling a recording

To schedule a recording, simply click on the Program title, this will give you more information about that program, from there you can click on 'Schedule for recording'. When you click a "record" button, the 7 Day EPG schedules a task to record your TV show from a DVB-T channel. The scheduled task is added to **Windows Scheduled Tasks**.

Please note: you need to have a user name and password on your PC in order for he scheduled recordings to record through Windows Scheduled Tasks.

The scheduled recordings can be viewed and modified through the WinTV-Scheduler. The format of the file name is [Programme title]_[Time]_[Date].mpg



Page 17

Troubleshooting

To remove the driver and application

Insert the installation CD, click **Start / My Computer**, double click your **CD-ROM drive**, double-click on a file called **hwclear.exe** put a tick in **Search for**. If you now re-start the computer with the WinTV-NOVA-TD disconnected and wait until Windows has fully loaded. Connect the WinTV-NOVA-TD stick gain and follow the instructions from the start of this guide to install the driver and application software again.

No TV station are found

Please ensure that you are located in a area that has Digital Terrestrial TV coverage.

Please visit www.dtg.org.uk/retailer/coverage.html

If your area does have digital Terrestrial TV coverage, please check your TV antenna as most antennas that are over 10 years old may not support the Digital TV broadcasts and you need to update yours to a Wideband or Highgain.

You can manually search for Digital TV stations by entering the LCN number for your local transmitter. If you enter your post code in this link: www.wolfbane.com/cgi-bin/tvd.exe you will be presented with the local transmitters. You need to write down the LCN numbers.

If you then open the WinTV application, in the channel suite manager click on sources and DVB-T source. You can now enter the LCN numbers into the space under channels and click on the Tune button. See also page 5 and 6.

Message appears "Video streaming failed. Device needs to be connected to a USB2.0 Hi-Speed port."

You need to connect the WinTV-NOVA-TD to a USB2.0 port, if you have more than one USB port on your computer try connecting it to this port.

Audio and Video are out of sync:

Please go to Start / All programs / Hauppauge WinTV and select **Primary**.

Select one of the options: Force Primary, Allow VMR, Allow Overlay or DIB draw (if you have an ATI graphics, selects Allow VMR).

Try running the application with each change.

Also try updating the drivers for your graphics card and sound card from their respective manufacturers websites.

Page 21

The items that need to be set for each event are:

● **Source selection:** leave set at WinTV to bring up the WinTV at the requested time and on the requested channel. Select Reminder to just pop-up a text file as reminder.

● **Time to Begin Program:** set to the desired start time. The default time is about 3 minutes from the current time. Click on the hour to set the hour, the minute to set the minute to start the program.

Note: It is always possible that your TV show will be transmitted in advance or late, and it takes about 10 seconds to launch the WinTV and set up for recording. Please set the Time to Begin Program few minutes before the time your TV show should starts.

● **Program Duration:** set the duration of this event, using the arrows (steps of 30 minutes) or directly the keyboard. This will update the Time to End Program window.

● **Date to Begin:** today date is the default. Change this if you want to schedule on another date.

● **Program Period:** One Time Only, Every day or Weekly are the choices. If you select the Weekly option, select the day you would have the show recorded too.

● **Date to End:** today date is the default. If you have already selected Every day or Weekly option, you must change this date. Typically, the TV show programming change at summer, so do not enter a Date to End in years (except for the 8:00 PM News).

● **Channel selection:** chose one of your scanned channels.

● **Recording options:** click on Record to File to record your show. Leave this button unchecked to watch TV at the requested time. You can also name your file to record.

Once these are set, click **Set Program**. You can add more Events, up to two recordings at once. It's currently the only way to record two channels at the same time.

When you are finished click **Close**. The WinTV program does not have to be running for the Scheduler to work, but you PC need to be turn on. If WinTV is not running, it takes about 10 seconds to start WinTV and to start the recording of TV.

Page 14

7. Installing the Remote Control (on some models)

The WinTV's remote control software is installed automatically during the installation of the WinTV applications. The installation will add the shortcut "AutoStart IR" to the Start-up group. If this is not the case, you can manually install the WinTV's remote control software from the installation CD-ROM / IR32 folder. Double click on IR32.exe.

1. Insert the batteries into the the **Infrared Remote control**.

2. Ensure the IR icon is on the start bar - **IR.exe** is loaded when Windows starts only if your WinTV is connected.

Note: If you don't see the WinTV Remote icon in the system tray or if you need to reset the remote control application, select "Restart IR" from the Start / All programs / Hauppauge WinTV directory. You should restart the IR program each time you plug your WinTV - except if it was plugged before Windows started.

Checking the function of the IR Remote

Make sure you see the black remote icon in the system tray (the area next to the clock in the taskbar).

Point the Remote transmitter at the Remote control receiver (the little eye on your WinTV Stick) and press the "Go" button. This should open the "WinTV Remote" menu. Press the "OK" button to start WINTV.EXE or use the "Up" and "Down" arrows on the remote to select another option.

Note: The WinTV application only responds to the remote control if it is the active window.

Note: If you have a Windows Media Center PC and you do not have a Media Center Remote you can use the Hauppauge Remote instead (the remote is not Media Center certified and some functionality may not be available).

Note: The credit card sized remote can be stored in a laptop's PCMCIA bay while not in use.

Page 18

Message appears after clicking on Live TV in Windows Media Centre "Decoder Error"

This message means that you do not have a MPEG-2 decoder installed or that your VGA graphics card or Sound card are not Media Centre certified or the drivers needs to be updated from the manufacturers site. For a list of compatible MPEG-2 decoder software check the Windows Media Centre section on the Microsoft.com website.

6. The 7 Day EPG

What is 7 Day EPG for WinTV

Certain digital DVB-T channels, along with their TV programmes, contain a TV channel guide. This guide is a listing of the programs being shown for the next 7 days, and includes the TV programme name, programme start times and length. The 7 Day EPG for WinTV extracts TV guide data from a DVB-T channel which contains this data. It creates a database on your computer.

When the Hauppauge 7 Day EPG opens up with its chart of times and TV programs, it reads the EPG database and formats the 7 Day EPG guide window. If you would like to record one of these TV programmes listed in the 7 Day EPG for WinTV window, you simply click the "Record" button and at the correct time your TV show will be recorded on your PC.

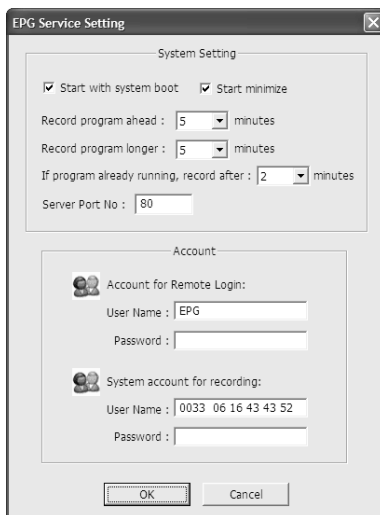
Configure the EPG Service:

● Start with system boot - Starts the EPG Service automatically each time you start your computer.

● Start minimize - Starts the EPG Service minimized in the system tray.

● Record program ahead/longer - Specifies the recording overlap before and after a scheduled recording.

● Server Port No.: Specifies which port the EPG Service should run on (Default is port 80 however if you are hosting your own webpage you will need to alter this).



● Account for remote login - Enter a username/password to access the EPG service from any other internet enabled computer.

● System Account for recording - Enter the username/password for the user account you are currently using (the EPG service will use this account to be able to start up the WinTV application).

Page 15

Remote Control Buttons

When watching live TV

Go: Open the "WinTV Remote" menu, allowing you to start the WinTV application

Power: Exit the WinTV application

TV: Bring WinTV to the foreground (if not currently active) / Full screen TV mode on/off

Arrows & OK: Select and confirm options in the WinTV Remote menu or the Windows task list.

Back/Exit: Stop a recording / Exit pause mode and close the Pause/Record tray (as the Stop button)

Menu: Brings up the Windows task list. Use the left and right arrows to change to other Windows tasks, and click OK. Menu is an always active button.

Vol+ and Vol-: Control the audio volume

Mute: Audio on/off

Ch+ and Ch- buttons: Select the next/previous channel

Prev.Ch: Swap to last viewed channel

Record button: Open the Pause/Record tray & start a recording. See section Remote Control Buttons during a Recording

Stop button: Stop a recording / Exit pause mode and close the Pause/Record tray (as the Back/Exit button)

Play button: Open the Pause/Record tray & play back the last recording. If you didn't record any TV shows recently, it will open the MyVideos folder. See section Remote Control Buttons during Pause TV or Playback

<< (Rewind): Swap between Title and No-Title mode

>>: Turn to Full screen TV mode

Pause button: Open the Pause/Record tray & pause live TV (pause mode). Clicking again will play from the point where the button was originally pushed

0-9: Direct access to channel number

Text (*): Start VTPlus teletext application (if installed)



Page 19

FCC Statement

Radio Interference Statement:

The WinTV boards have been tested and found to comply with the limits for a Class B digital device, pursuant to part 15 of the FCC Rules. These limits are designed to provide reasonable protection against harmful interference in a residential installation. This equipment generates, uses, and can radiate radio frequency energy and cause harmful interference to radio communications. However, there is no guarantee that interference will not occur in a particular installation. If this equipment does cause harmful interference to radio or television reception, which can be determined by turning the equipment off and on, the user is encouraged to try to correct the interference by one or more of the following measures:

● reorient or relocate the receiving antenna.

● increase the separation between the equipment and receiver.

● connect the equipment into an outlet on a circuit different from that to which the receiver is connected.

● consult the dealer or an experienced radio/TV technician for help.

FCC ID: H90WINTV

CAUTION: Changes or modifications not expressly approved by the party responsible for compliance to the FCC Rules could void the users authority to operate the equipment.

CE Statement: This equipment has been tested and complies with EN 55013, EN 55020 and IEC 801-3 part 3 standards.

Page 23

How to use 7 Day EPG for WinTV

1. You should see an icon close to the Windows clock.

You will reach the menus of the 7 Day EPG by a right click on this icon.

2. You should then see the EPG Service window: It show the status of the EPG service.

The buttons below the window give you the following controls:

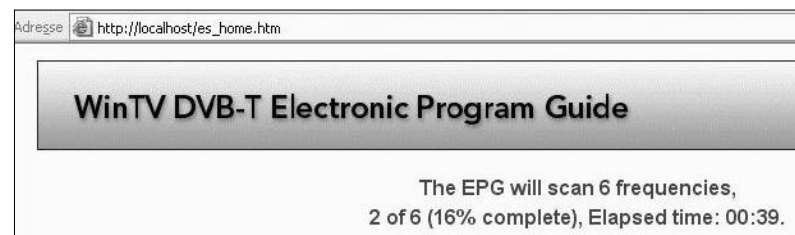
- Start/stop the EPG Service
- Modify the current settings
- Open the EPG help file
- Exit the EPG application

To view the EPG guide click 'View EPG' See Step 4 for more information.



3. Viewing the EPG information

From the EPG application window, click 'View EPG' this will open a web page showing the EPG information, initially the application will need to scan and update the EPG information. The amount of time it takes to read the data is related to the number of channels in your DVB-T transmission area. The more channels, the longer it takes to read all of the data, this may take several minutes:



The EPG will scan 6 frequencies, 2 of 6 (16% complete), Elapsed time: 00:39.

Page 16

Remote Control Buttons during a Recording

Note: Most WinTV functions and remote buttons are disabled when recording

Record button: Set the duration of the recording, by steps of 15 minutes up to 2 hours, then by steps of 30 minutes up to 4 hours. Clicking again will disable recording duration. This information is displayed in the Pause/Record tray.

Stop button: Stop recording and close the Pause/Record tray (as the Back/Exit button)

Pause button: Freeze the video. Press the Play or Pause button again to unfreeze the video. The Pause button has no effect on the recording itself. While the video is frozen, the recording is continued in the background, there is no Rewind, Forward, Skip, Replay function.

Remote Control Buttons when Pausing TV or Playing a Video

Note: You cannot change channels when Pausing TV

Record button: Stop current action and start a recording

Stop button: Stop playing or Exit pause mode and close the Pause/Record tray (as the Back/Exit button)

Play button: Play the recorded TV or TV from the pause buffer (if Pause/Record tray opened). Play and Pause button have alternatively the same function.

<< (Rewind): Play backwards at 8x speed. Clicking again will play paused TV or recorded TV at 1x

>> (Forward): Play forward at 2x speed. Clicking again will play forward at 8x, then back to 1x

Pause button: Start Pause-Mode (TimeShift). Press Play or Pause again to continue watching from where you left off

>1 (Skip): Skips ahead in the Pause buffer by 10 seconds per click. Holding the Skip button will auto-repeat, and advances the video about 10 minutes per 15 seconds the button is depressed

I< (Replay): Skips backward in the Pause buffer by 10 seconds per click. Holding the Replay button will auto-repeat, and advances the video about 10 minutes per 15 seconds the button is depressed

Quick Jump 0 to 9 buttons: When playing a video, you can quickly skip through the video by pressing the 0-9 buttons. When you press one of these buttons, you will skip to, for example, 10% of the video file when you press '1', 20% of the video file when you press '2' and so forth (% of the length of the file).

During Pause-Mode, any key skips ahead in the Pause buffer to -2 seconds.

Page 20

Waste Electrical and Electronic Equipment (WEEE)

The device may not be disposed of with household rubbish. This appliance is labeled in accordance with European Directive 2002/96/EG concerning used electrical and electronic appliances (Waste Electrical and Electronic Equipment - WEEE). The guideline determines the framework for the return and recycling of used appliances as applicable throughout the EU. To return your used device, please use the return and collection systems available to you.

Page 24