

## myTV.t Quick Installation Guide

©Hauppauge Computer Works, Inc. 2007 · QI-MYTV-T-V1.0-ENG · 2007/11/08

**Hauppauge Computer Works, Ltd.**  
10 Borough High Street  
Bank Chambers  
London, UK, SE1 9QQ  
www.hauppauge.co.uk

Tech Support: (+44) 0207 378 0202  
Telephone: (+44) 0207 378 1997  
Fax: (+44) 0207 357 9171  
support@hauppauge.co.uk

### Contents of this myTV.t package

- myTV.t unit
- Installation CD-ROM including the following software components:
  - WinTV v6 application
  - WinTV-Scheduler
  - 7 Day EPG
- This installation guide



### 1. Connecting the Aerial

Plug your roof top aerial or portable TV antenna into the myTV's TV Connector.

It is recommended that you connect to a roof top aerial as this may provide a better signal quality than portable antenna. You will need to ensure that you are located in an area that has Digital Terrestrial coverage. Please visit [www.dtg.org.uk/retailer/coverage.html](http://www.dtg.org.uk/retailer/coverage.html)  
Sweden: [www.teracom.se](http://www.teracom.se)  
Denmark: [www.digi-tv.dk](http://www.digi-tv.dk)  
Finland: [www.digitv.fi](http://www.digitv.fi)  
Poland: [www.emitel.pl](http://www.emitel.pl)

### 2. Installing the myTV.t

1. Locate a free USB 2.0 port (normally located at the side or back of the computer). Due to power and bandwidth requirements, we do not recommend connecting the unit into a USB Hub.
2. Turn on your PC and wait until Windows has completely started.
3. Plug the myTV.t stick into the USB 2.0 port.

Page 1

### 3. Install the myTV Drivers and Applications

**Note:** If you have any anti-virus software enabled, please disable it during the installation of the software.

When you attach the myTV.t, the Found New Hardware Wizard will appear.

Click on **Cancel**.

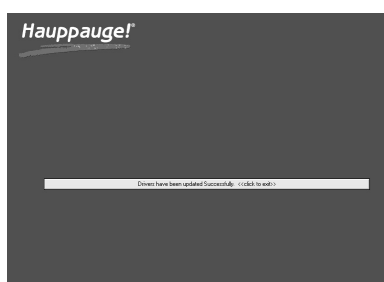
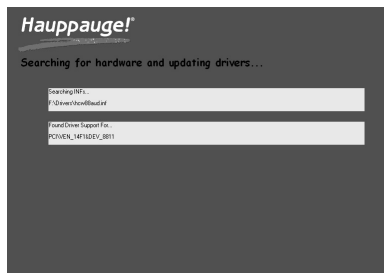
Insert your Hauppauge Installation CD-ROM, the installation window will automatically appear.

**Note:** If the autorun does not start, browse to the files on the disc and double click on the file called 'Setup'.

In the installation window click on **Step 1: Install Drivers**.

A blue screen will open which will begin installing and updating the drivers for your product.

Once complete, a message appears in the bar. If this message is **Drivers have been updated Successfully**, click on the bar to exit. If the message reports an error, check the connection of your myTV, or contact our technical support.

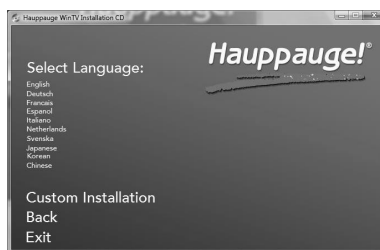


Page 2

Next, click on **Step 2: Install Software** and select your language from the list. The setup window should appear and begin to automatically install the myTV/WinTV applications.

**Note:** During the installation, other installation wizards may open, we recommend following the instructions in each of these and installing with the default options available.

**Note:** For advanced users you can select the 'Custom Installation' which will allow you to modify the list of applications that are installed by default.



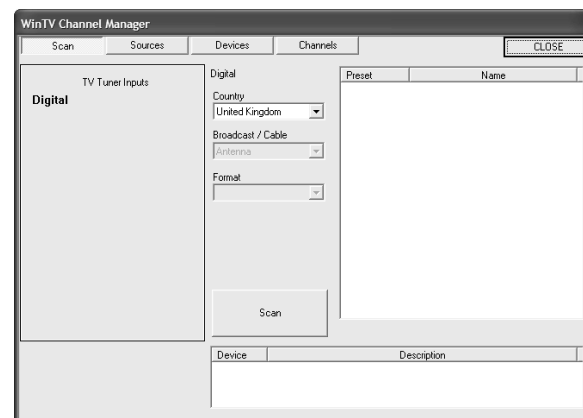
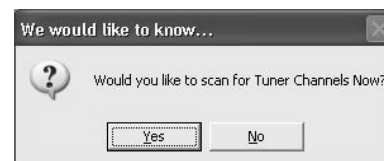
Once the WinTV installation is complete, click **OK** then **Exit** in the window "Hauppauge WinTV Installation CD". You should now be back at your Windows desktop.

Page 3

### 4. The WinTV® for myTV application

To start the WinTV for myTV application, double click on the **WinTV icon**.

When you run WinTV application for the first time, a message will appear asking you to scan for tuner channels now. Please ensure that the TV antenna is connected, click **YES**.



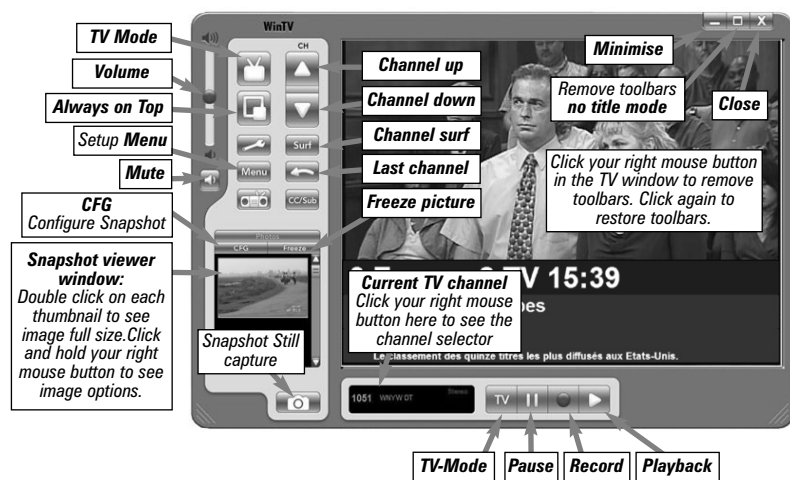
Select your country location, for instance, select United Kingdom and then, select Scan.

The scanning process for DVB-T will then scan for channels. When DVB-T channels are found they then will appear in the channel listing box.

**Note:** If you have attached an antenna and do not receive any digital TV channels, either use a stronger antenna (a roof top antenna is recommended for best reception) or try to add a TV channel manually (see trouble shooting section).

Page 4

### Watch TV



#### Changing channels

You can change channels by using the **Channel Up** or **Channel Down** buttons on the WinTV. You can type a channel number (for example: 27) and WinTV will tune to that channel. If the entered channel does not exist, you will see a black window.

You can also right click in the Current TV channel box, where you will see a list of channels. Or type letters (for example: BBC) to access to the list of the channels including these letters.

#### TV Mode

When you click the **Full screen TV** button, TV will appear full screen on your PC monitor. When finished watching TV full screen, click your right mouse button in the TV window. If you see video with a black box around it, click the **Pref** button then click TV mode tab. Check the box which says "Allow resolution change".

#### "Always on top" Mode

The WinTV application will remain in view over any other applications even if it is not selected. To turn on, click the **Always on top** button. It will turn green. To turn off, click this button again.

A convenient way to use Always-on-top is to make the TV window in the no-title mode small, and to make the TV window in the title mode larger. Then you can switch from a small window to a larger one by clicking the right mouse button.

Page 5

#### Pref button

Click the **Pref** button to open the preferences menu:

**View:** These are the settings for the On Screen Display of the TV channel and Audio Volume, where you can enable Close Captions (if supported in your system configuration), plus controls for the Toolbar mode (Title mode), NoToolbar mode (No Title) and Full Screen (TV mode).

**Movies:** Here is where you configure some video and audio settings. You can set the movie record directory (DVCR Record File Path).

**Snapshot:** Set the size of your captured images, plus single or two field captures for capturing motion or still image video.

**Audio:** Your audio settings are configured here.

#### Menu button

Click the **Menu** button to open the TV setup menu. Here is the main control bar for TV channels, and duplicate controls for other functions:

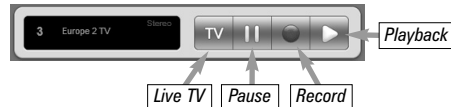
**Suite-Manager:** Configure the TV tuner (scanning, channel pre set, etc.) and setting up favourite channel lists.

**Configuration:** Duplicate configuration menus for colour, audio, etc.

**View:** For settings an exact TV window size: 320x240, 640x480 etc.

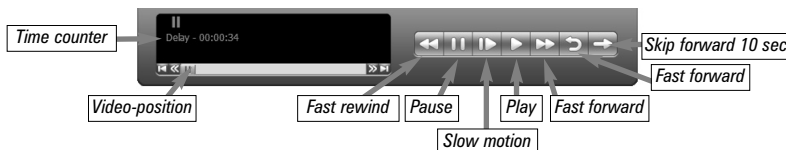
### Pause, Record and Playback TV

There are four buttons to control the watching, recording, pausing and playback of TV. Clicking on the **Pause** button will cause the Pause menu to roll down from the WinTV application, while clicking on either the **Record** or **Playback** button will cause the Record menu to roll down. Click the TV button will close the roll down menus to close and for live TV to be displayed in the WinTV video window.



#### Pause mode

The pause mode allow you to pause the Live TV picture and allows you to use the TimeShift function to rewind and fast forward the TV. Clicking the **Pause** button on the WinTV application starts the **Pause mode**. The Pause Menu will drop down.



Page 6

#### Pause Buffer

The Pause buffer is space on your hard disk where video is stored during the Pause mode. The maximum amount of time which your TV program can be delayed is dependent upon how much storage space you have set for the Pause buffer.

Clicking the **Pause** button will start recording into WinTV's Replay Buffer. It takes about 10 seconds for the Replay Buffer to be initialized and for **Pause** to become effective.

Unclicking the **Pause** button will cause the audio/video program to start playing from the point where the button was originally pushed.

Most WinTV functions are active while in the **Pause** or **Pause Live** mode. For example, you can change volume, resize the TV window, go into "no-title mode", etc.

While in **Pause** mode, the Video Position bar shows the amount of the Replay Buffer which is filled with video. For example, if the Video Position indicator shows halfway, it means that half of the Replay Buffer is filled. If you find you cannot **Pause** as many minutes as you would like, increase the size of the Replay Buffer.

While in **Pause** mode, the A/V stream is always saved in the Replay Buffer. To stop saving the A/V stream in the Replay Buffer, you must exit the **Pause** mode by clicking **TV mode**.

#### Replay

While in the **Pause** mode, hitting the **Replay** button acts like the Instant Replay you see on TV broadcast sporting events: the audio/video goes back in time and you repeat what you have previously seen. Each click of the **Replay** button causes audio/video to go back 10 seconds. For example, if you want to repeat the audio/video you saw 10 seconds ago, you would click the **Replay** button once. If you want to see the video you saw one minute ago, you would need to click the **Replay** button six times.

For extended replay times, you might find it more convenient to grab the Video Position indicator control bar and move it to the left. Once you let the control bar go, audio/video starts to play (it might take a few seconds for the WinTV application to start playing).

You might have to move the Video Position indicator to the left and right to find the desired spot to start replaying audio/video.

While **Replaying**, your audio/video program continues to be recorded in the Replay Buffer. Therefore, if you have clicked the **Replay** button 3 times (so that you are replaying the audio/video seen 30 seconds ago), the video you see in the WinTV window will be 30 seconds behind the live program.

#### Skip Ahead

Clicking the **Skip** button will skip the video ahead 10 seconds.

Page 7

#### Rewind

Clicking the **Rewind** button while playing video will rewind the recorded video. Clicking the **Rewind** button again will continue the playing.

#### Slow Motion

Clicking the **Slow Motion** button while playing video will play in Slow Motion. Clicking the **Slow Motion** button again, will continue playing normally.

#### Fast Forward

Clicking the **Fast Forward** button one time will fast forward your video at 2X speed. Clicking the **Fast Forward** button two times will fast forward your video at 8X speed.

### Record and Playback modes



Click the **Playback** button on the WinTV application to open the **Record and Playback** control bar. Clicking the **Record** will automatically generate a file name and start recording your audio/video program. If you click **Record** button more than once, a record timer will be set and the recording will be done for 15 minutes for each time the **Record** button is clicked. For example, if you click the button 3 times, the WinTV will record for 30 minutes.

#### Functions:

- When recording TV, the record button will depressed
- A time counter will be shown indicating the length of time of the recording

If you click **Stop** the time counter will revert back to 00:00:00. The time is specified in a **Hour:Minute:Second** format.

#### Stop

Clicking the **Stop** button will stop the video you are recording or playing back.

#### Play

Clicking the **Play** button will playback from disk the last video file created. When playing a video, you can rewind, fast forward, replay 10 sec or skip forward 10 sec using the buttons on the control bar.

#### Pause

Clicking the **Pause** button while **Playing** will pause your audio/video.

Page 8

**Rewind**  
Clicking the **Rewind** button will play the video file in reverse. Clicking the Rewind button again will continue the playing of the video.

**Fast Forward**  
Clicking the **Fast Forward** button one time will fast forward your video at 2X speed. Clicking the Fast Forward button two times will fast forward your video at 8X speed. Clicking the button again will continue playing back at normal speed.

**Slow Motion**  
Clicking the **Slow Motion** button during playback will cause the video to play in slow motion (at 1/2 speed). Clicking the Slow Motion button again will return the video to normal playback speed.

**File button**  
Clicking the File button opens the File menu. The last file recorded is listed in the File name box. In the File menu you can:

- **Rename your recorded video file:** To rename a video file, find the file you would like to rename, highlight it with your mouse, and click and hold the right mouse button. Go down to Rename and then you can type in a new name. Remember: you must keep the MPG extension on the file.
- **Play a video file previously recorded:** Find the file you would like to play, highlight it with your mouse (one click of the mouse button) and click Open. Then click the Play button.
- **Delete recorded video files which you no longer want:** Click your right mouse button on the video file once, go down the menu and click Delete.

### Keyboard shortcuts

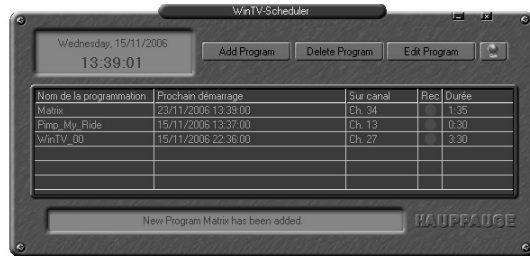
<b>Sound up</b>	- Page Up	<b>Ctrl+M</b>	- Mute on/off
<b>Sound down</b>	- Page Down	<b>ALT+M</b>	- Re-size TV menu
<b>Plus (+)</b>	- Chanel Up	<b>0-9</b>	- Channel number
<b>Minus (-)</b>	- Channel Down	<b>Space bar</b>	- Take a snapshot
<b>Ctrl T</b>	- Frame TV	<b>Ctrl F</b>	- Still image
<b>Ctrl P</b>	- Frame print		

## 5. WinTV-Scheduler

**WinTV-Scheduler** allows you to schedule the recording of TV shows. WinTV-Scheduler, once it is set, can be closed, and the WinTV application will "wake up" at the desired time and tuned to the desired channel.

After installation, WinTV-Scheduler can be found by going to **Start / Program files / Hauppauge WinTV**.

To set up an event for timed watching or recording, click on the **Add Program**.



WinTV-Scheduler works by using the Windows Task Scheduler to launch WinTV at the chosen time. WinTV-Scheduler sets up a command line in Task Scheduler to run WinTV, specifying a TV channel and a length of time to record.

**Note:** You cannot access the Wing settings until you have purchased the optional transcoder software, for more informations see [www.hauppauge.com/wing](http://www.hauppauge.com/wing). Please refer to the Wing manual for information on using the Wing settings.



The items that need to be set for each event are:

- **Source selection:** leave set at WinTV to bring up the WinTV at the requested time and on the requested channel. Select Reminder to just pop-up a text file as reminder.
  - **Time to Begin Program:** set to the desired start time. The default time is about 3 minutes from the current time. Click on the hour to set the hour, the minute to set the minute to start the program.
- Note:** It is always possible that your TV show will be transmitted in advance or late, and it takes about 10 seconds to launch the WinTV application and set up for recording. Please set the Time to Begin Program few minutes before the time your TV show should starts.
- **Program Duration:** set the duration of this event, using the arrows (steps of 30 minutes) or directly the keyboard. This will update the Time to End Program window.
  - **Date to Begin:** today's date is the default. Change this if you want to schedule on another date.
  - **Program Period:** One Time Only, Every day or Weekly are the choices. If you select the Weekly option, select the day you would have the show recorded too.
  - **Date to End:** If you have selected the Every Day or Weekly option, you can specify the date at which it will stop this task.
  - **Channel selection:** choose one of your scanned channels.
  - **Recording options:** click on Record to File to record your show. Leave this button unchecked to watch TV at the requested time. You can also name your file to record.

Once these are set, click **Set Program**. You can add more Events, clicking **Set Program** after each event is set. When you are finished click **Close**.

The WinTV program does not have to be running for the Scheduler to work, but your PC needs to be either turned on, in Standby or in Hibernate Mode, but you should not be logged off. If WinTV is not running, it takes about 10 seconds to start WinTV and to start the recording of TV.

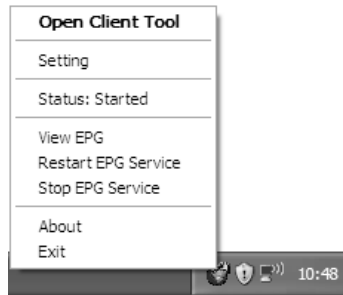
## 6. The 7 Day EPG

**What is 7 Day EPG**  
Certain digital DVB-T channels, along with their TV programmes, contain a TV channel guide. This guide is a listing of the programs being shown for the next 7 days, and includes the TV programme name, programme start times and length. The 7 Day EPG extracts TV guide data from a DVB-T channel which contains this data. It creates a database on your computer.

When the Hauppauge 7 Day EPG opens up with its chart of times and TV programs, it reads the EPG database and formats the 7 Day EPG guide window. If you would like to record one of these TV programmes listed in the 7 Day EPG window, you simply click the "Record" button and at the correct time your TV show will be recorded on your PC.

### How to use 7 Day EPG

1. You should see an icon of a globe close to the Windows clock. Right click on this icon to give a list of options.



2. Select **Open Client Tool** to see the EPG Service window: It shows the status of the EPG service.

The buttons below the window give you the following controls:

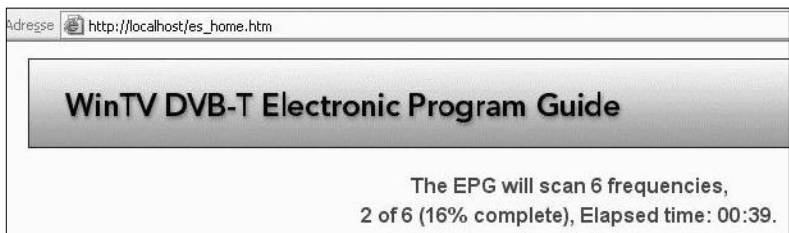
- Start/stop the EPG Service
- Modify the current settings
- Open the EPG help file
- Exit the EPG application

To view the EPG guide click **'View EPG'** See Step 4 for more information.

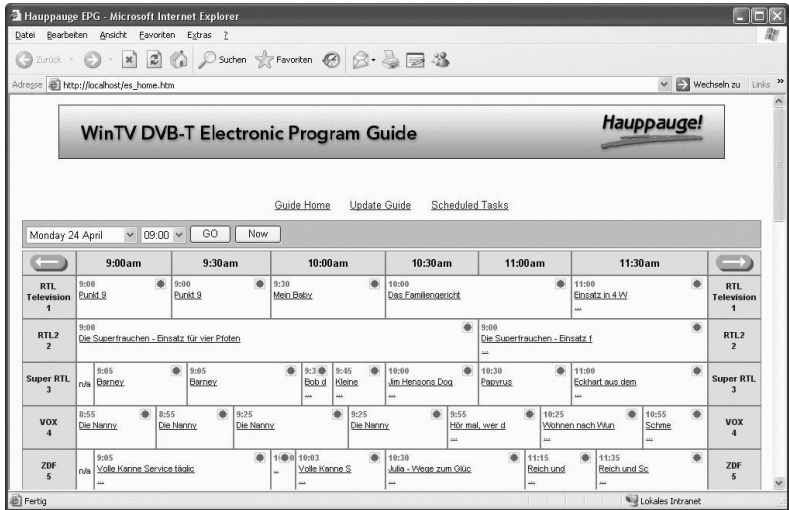


### 3. Viewing the EPG information

From the EPG application window, click 'View EPG' this will open a web page showing the EPG information, initially the application will need to scan and update the EPG information. The amount of time it takes to read the data is related to the number of channels in your DVB-T transmission area. The more channels, the longer it takes to read all of the data, this may take several minutes:



Once the scanning is complete you will be able to see the EPG guide:



### 4. Scheduling a recording

To schedule a recording, simply click on the Program title, this will give you more information about that program, from there you can click on **'Schedule for recording'**. When you click a "record" button, the 7 Day EPG schedules a task to record your TV show from a DVB-T channel. The scheduled task is added to **Windows Scheduled Tasks**.

**Note:** You need to have a user name and password on your PC in order for the scheduled recordings to record through Windows Scheduled Tasks.



The scheduled recordings can be viewed and modified through the WinTV-Scheduler.

The format of the file name is [Programme title]\_[Time]\_[Date].mpg

## Troubleshooting

### To uninstall the Driver and Software

To uninstall the software simply run **hwcwclear** from the installation CD-ROM and select the last 2 options 'remove all WinTV drivers and applications (total removal)' and 'search all INF files'. If you now select **OK** a black screen will briefly appear and once it has disappeared the software will be removed. If you now re-start the computer you will be at Step 3 on page 3 of this document and can now re-install the software.

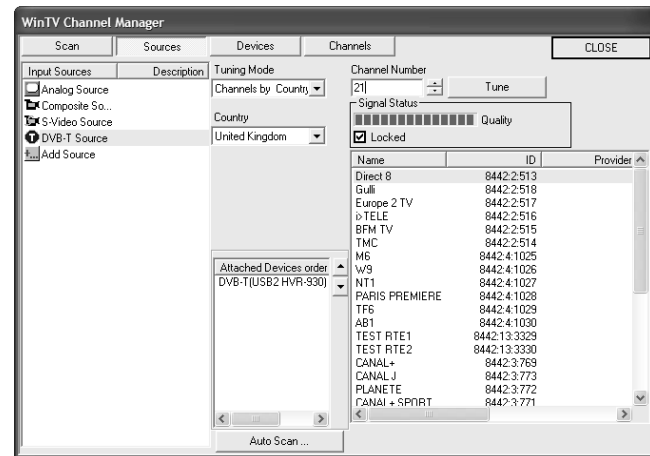
### Only some channels are found during DVB-T channel scan

Check if there are transmitter works on your local transmitter here: [www.bbc.co.uk/reception/transmitters/today.shtml](http://www.bbc.co.uk/reception/transmitters/today.shtml) as this could effect the reception of certain channel.

### Adding a TV channel manually

If the scan did not succeed, you can add a channel manually by entering the LCN number for your local transmitter. Enter your post code in this link: [www.wolfbane.com/cgi-bin/tvd.exe?](http://www.wolfbane.com/cgi-bin/tvd.exe?) to be presented with information on your local transmitters.

**Note:** Your local transmitter should be the closest transmitter with a H in the 'Pol' column. You need to write down the LCN numbers.



In the **WinTV Channel Manager**, click on **Sources** then **DVB-T Source**, enter the LCN numbers into the space under **Channel Number** and click on the **Tune** button. The channel number will then be scanned and any channels found will be listed in the channel list below.

### TV display has problems (e.g. no picture but with sound or blurred image)

With the WinTV application closed click on the WinTV program group (Start / Programs / Hauppauge WinTV) there is a utility called "Primary". Within Primary, select a different option from the main list of four items (Allow VMR/Allow Overlay/Force Primary/DIB Draw), close the application using the X in the top right hand corner then restart the TV program. Repeat this process for all four options to determine the best option for your computer.

### "Error code 10" during installation

This is caused by a failure to load the myTV.t drivers. Uninstall the software (as above) and then follow the instructions from page 3. If this still give you an error message move the myTV.t to a different USB port and re-install the drivers again.

## FCC Statement

### Radio Interference Statement:

Hauppauge products have been tested and found to comply with the limits for a Class B digital device, pursuant to part 15 of the FCC Rules. These limits are designed to provide reasonable protection against harmful interference in a residential installation. This equipment generates, uses, and can radiate radio frequency energy and cause harmful interference to radio communications. However, there is no guarantee that interference will not occur in a particular installation. If this equipment does cause harmful interference to radio or television reception, which can be determined by turning the equipment off and on, the user is encouraged to try to correct the interference by one or more of the following measures:

- reorient or relocate the receiving antenna.
- increase the separation between the equipment and receiver.
- connect the equipment into an outlet on a circuit different from that to which the receiver is connected.
- consult the dealer or an experienced radio/TV technician for help.

**FCC ID:** H90WINTV

**CAUTION:** Changes or modifications not expressly approved by the party responsible for compliance to the FCC Rules could void the user's authority to operate the equipment.

**CE Statement:** This equipment has been tested and complies with EN 55013, EN 55020 and IEC 801-3 part 3 standards.

## Waste Electrical and Electronic Equipment (WEEE)

The device may not be disposed of with household rubbish. This appliance is labeled in accordance with European Directive 2002/96/EG concerning used electrical and electronic appliances (Waste Electrical and Electronic Equipment - WEEE). The guideline determines the framework for the return and recycling of used appliances as applicable throughout the EU. To return your used device, please use the return and collection systems available to you.