

MediaMVP/wMVP Quick Installation Guide

© 2006 Hauppauge Computer Works - Qi-MEDIA MVP/V3.0-UK - 2006/06/14

Hauppauge Computer Works, Ltd.
10 Borough High Street
Bank Chambers
London, UK, SE1 9QQ
www.hauppauge.co.uk

Hauppauge Computer Works, Inc.
91 Cabot Court
Hauppauge, NY 11788
www.hauppauge.com

Hauppauge Digital Asia, Pte. Ltd.
Blk 1093, Lower Delta Road #04-05
Tiong Bahru Industrial Estate
Singapore 169204
www.hauppauge.com.sg

Tech Support: (+44) 0207 378 0202
Telephone: (+44) 0207 378 1997
Fax: (+44) 0207 357 9171

Tech Support: (+1) 631 434 3197
Telephone: (+1) 631 434 1600
Fax: (+1) 434 3198

Tech Support: (+65) 276 4412
Telephone: (+65) 276 9163
Fax: (+65) 276 9167

Contents of the MediaMVP/wMVP package

- **MediaMVP/wMVP device** with SCART or Svideo/Composite and S/PDIF outputs, the wMVP (Wireless MediaMVP) version has a built-in 802.11G transmitter and receiver and an external antenna.
- **Stand.**
- **Ethernet cable** 1.5 meters long. You can purchase longer Ethernet cables at most computer retail stores. Cat5 cable, as the cabling is commonly called, is available to lengths of 300 ft.
- Either **SCART cable** with composite, S-Video and RGB compatibilities in addition to stereo audio or **Composite/Audio AV cable** (depending on model).
- **Remote control** transmitter with 2 AAA batteries.
- **Installation CD-ROM** with:
 - Server application
 - User Interface application
 - Search for Media application



Page 1

1. Connecting MediaMVP to your TV set

Connecting to a TV set

Note: Your TV set needs to have either a SCART or AV inputs. If your TV only has RF inputs (normally from a TV antenna), then you will need to use a Video-to-RF modulator (not supplied).

Using the supplied SCART or AV cable, connect one end to the Media MVP and connect the other end to the SCART or AV Input on your TV set.

On your TV set
To display video from the MediaMVP, you need to select the Video Input on your TV set. Each TV set does this differently, but many TV sets have a button marked "TV/Video" or "AV". Pressing this button normally switches from the TV tuner inside your TV set to the Audio/Video inputs being used by MediaMVP.
If you cannot find a way to switch to Video Input on your TV set, refer to the TV set manual.

2. Installing the MVP software on your PC

When you have made all your network and TV connections, boot your PC and insert into your CD-ROM drive the MediaMVP Installation CD-ROM. The autorun should start automatically the installation. If not, navigate to your CD-ROM drive and run MediaMVPSetup_###.exe (where ### is the version number of the setup program). This installation should take a few minutes.

Select your language and click **OK**.



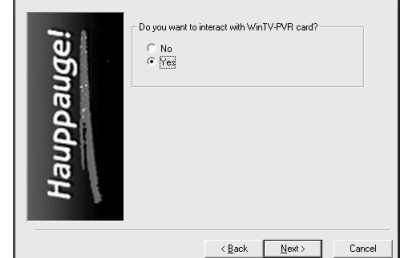
Close any other applications that may be running and click **NEXT**.



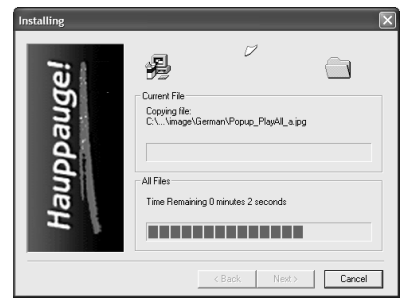
Page 2

3a. Configuring for a wired Ethernet network

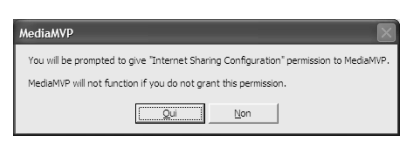
You will be asked if you would like MediaMVP to be allowed to schedule a recording via a Hauppauge WinTV. This is optional.



Enter the user name and password of the windows user account you are currently using (needed to allow the MVP to schedule a recording).



Click **Yes** to continue.



Click **Finish** to end the installation process.



Page 3

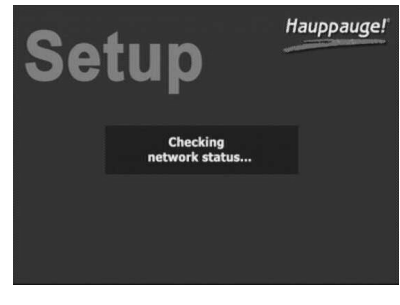
3a. Configuring for a wired Ethernet network

Plug in the supplied power adapter to a wall socket, and plug the 6volt power plug into the MediaMVP. Connect the MediaMVP (optional for wMVP) via a Cat5 wired Ethernet network. Just run a Cat5 cable from your access point and plug it into the LAN jack on the MediaMVP. The MediaMVP will detect that the LAN jack has been plugged in and will use a wired setup which only requires the selection of the **MediaMVP Preferred Server**. If you cannot get beyond **Contacting DHCP Server**, you are not connected to your hub, router or access point, or your cabling is defective. If you are directly connecting your MediaMVP to a PC and you get this message continuously, then you might be using a straight through Ethernet cable instead of the crossover cable. If you cannot get beyond **Contacting MediaMVP Bootserver**, your PC might be protected by a firewall, or the MediaMVP services have not started on your PC. Turn off your firewall to see if this is causing this problem, and if so, you need to reconfigure your firewall to allow the MediaMVP to access your PC (see "If you have a Firewall on your network" section).



3b. Configuring for a wireless network

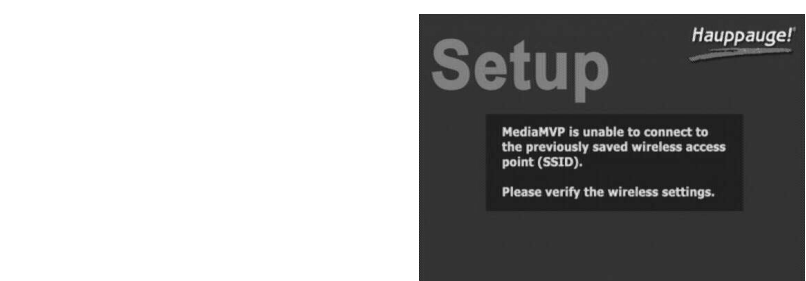
Plug in the supplied power adapter to a wall socket, and plug the 6volt power plug into the wMVP. You will see the following screens:



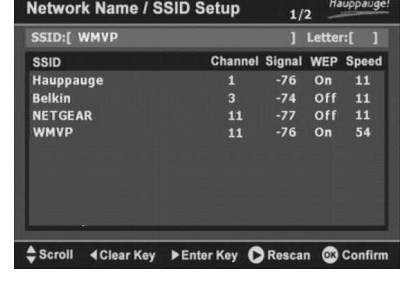
You will be asked to press **OK** within 3 seconds to enter the wireless setup menu otherwise the unit will boot with the default or previously setup options.



Page 4



The first time you power up wMVP, it needs to be setup for your wireless network. You will see a list of wireless **Access Points (SSID)** which the MediaMVP can "see".



Use your **MediaMVP remote control**. Cursor down and choose your Access Point. Press **OK**. In this example, we are using the Access Point named **WMVP**.



If you have enabled an access code (WEP) on your Access Point, you need to enter the WEP key. Use the keypad on the MediaMVP remote control to enter the WEP key. Make sure you press the **right cursor** button on the Hauppauge remote control for each WEP key you enter. When you have finished entering the WEP key (if necessary), press **OK**.



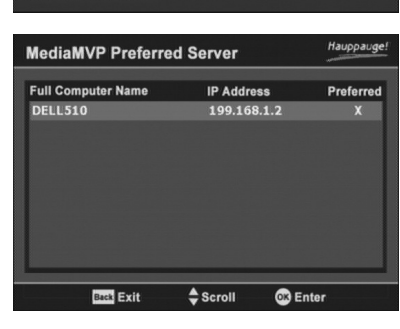
You will now be in the **MediaMVP Wireless Settings** menu. Cursor down to **Apply** and press **OK**.

After you press **Apply**, about 15 seconds later you will be in the main **Network Setup** menu. Cursor to **Server Profile** and press **OK**. You need to select the **Computer Name** where you have installed the MediaMVP server software (most networks only have one server). Choose your server and press **OK**.

Page 5

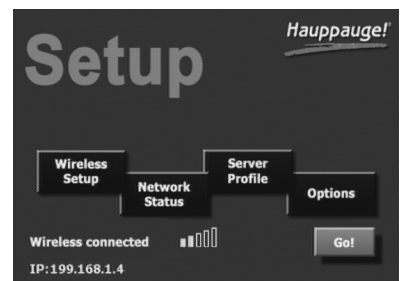


Once you are back in the **Network Setup** menu, cursor to **Go** and press **OK**.



The wMVP will now load its application software from the wireless network.

It takes approximately 2 minutes to boot the wMVP network from a cold start.



Page 6

Optimizing your wireless network for wMVP

The transmission of video over wireless networks requires the 54Mbit/sec 802.11G network. The biggest problem with playing wireless video on wMVP is making sure there are no 802.11B devices slowing down your 802.11G network. There are several symptoms of a wireless network not running at the full 54 Mbits/sec:

- you will see jerky video or stuttering video when playing Videos
 - you will get a loss of connection to your media server when playing videos and will see a message "Contacting server"
- Make sure your network is really running 802.11G only.** Most wireless networks will back down to the slower 801.11B speed if there is any device on the network which is running with 802.11B. For example, if your laptop is running at 802.11B speeds (max datarate: 11Mbits/sec), your entire network will run at the slower 802.11B speed and you will not be able to play videos.

In order to optimize a wireless network for high speed video operation, here are a few things you can do:

- **choose another wireless channel:** most Access Points come programmed to use channel 6 or 11, but you might find the default channel is being used by other wireless Access Points in your area. Therefore, change the setting on your Access Point to another channel. Changing channels is done through the setup program on your Access Point.
- **set your Access Point to 802.11G only.** Some access points can run at either 802.11B or 802.11G. This is also done via the setup program on your Access Point.
- **add another Access Point just for video:** Access Points are relatively inexpensive, and adding another Access Point to your network, with a different channel number, might significantly increase your network performance.

Microsoft has a good web page which talks about improving your wireless network performance:
www.microsoft.com/athome/moredone/wirelesstips.msp

Page 7

3c. Connecting directly to laptop or PC

You can connect the MediaMVP/wMVP directly to a PC or laptop via Ethernet. Since the direct connection from a MediaMVP to a PC is very fast, you will get maximum performance. To connect MediaMVP directly to your PC, you will need a 'crossover' cable which you can either buy at a computer store or make yourself.

Here is how you connect the MediaMVP directly to your PC or laptop:

1. **Purchase or make a crossover Ethernet cable.** Examples of a crossover cable are the Belkin CAT 5e Crossover Cable for computer-to-computer connection
 2. **Connect one end of the crossover cable** to the LAN port on the MediaMVP, and the other end to the LAN port on your PC or laptop
 3. **Make sure the MediaMVP software is installed on your PC or laptop.** See "Installing the MediaMVP software" section. Leave your PC turned on.
 4. **Connect the MediaMVP to the TV set**, and turn on the MediaMVP.
- If using a wMVP:**
You will be brought into the **Network Setup** menu on the TV set. On the PC, you should see a Windows message say "Ethernet connection found" and a minute or so later "Local Area Connection".
On the MediaMVP, in the Network:
Setup menu, select **'Wired'**, and move to **Apply** and press **OK**. Once you are back in the main Network Setup menu, move to **Server Profile**. Select your server and press **OK**. Move to **Go** and press **OK**.

Page 8

4. If you have a Firewall on your network

Most of the PC are secured by firewalls to prevent unauthorized access to data in your PC.

If you use a firewall , you will need to configure the firewall to allow the MediaMVP/wMVP to access a server application running on your PC.

ZoneAlarmPro Firewall
There are four firewall alert menus which pop up during the first use of MediaMVP. For each of these alerts, you should allow access by pressing Yes. Examples of warning messages are in the **Troubleshooting section**. To avoid warning messages from popping up each time you use MediaMVP, select "Remember this answer".

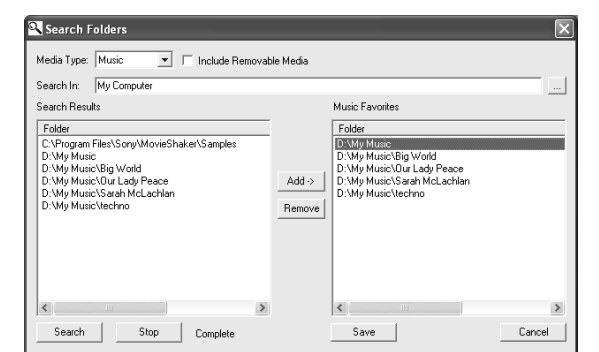
There are two MediaMVP services which will require access to your network: **Hcwsms.exe** and **MVPmedia.exe**. Grant access to both of these programs.

The built-in WindowsXP Firewall
Press **Start** and then go into **Control Panel** and then **Windows Firewall**. Remove the cross "Do not allow exceptions" then go to "Exception". Press on "add a program" then on "browse", go to C:\Program Files\Hauppauge MediaMVP and select on of the 7 different applications present in the folder (you can avoid UNWISE.EXE) Repeat the operation for the 5 other applications.

5. Search for Media

After installing the MediaMVP/wMVP, there are two ways of finding your media. You can either manually search for media from the TV set using MediaMVP's **Settings** menu, or you can automatically search for media using the **MediaMVP Search for Media** program on your PC (recommended).

To start the Search Folders program from the PC, press **Windows Start**, then **Programs**, and under **Hauppauge MediaMVP** run the **Search for Media** program.



- Select the **Media Type** (music, videos, pictures).
- Select the **Search In** directory. Chose "My Computer" to look in all directories, or browse your network if the Media you are looking for is located on a other PC of your network.
- Press **Search**.
- Any directory with the media type selected will appear in the **Search Results** box.
- Press on a directory and then press **Add**.
- Press **Save** before you move to another media type.

Note: right press your mouse in the Favorites list, then press **Add** to manually add a specific path (for example: when you already know where your music is on your disk drive, add that directory). To delete a directory, right press your mouse on a directory, then press **Remove**.

When you are finished searching for your media, press **Save** then close the Search application. The directories selected will be listed MediaMVP's Video, Music and Picture menus.

Searching for media from the MediaMVP
You can also choose directories for music, digital pictures and videos from the MediaMVP "Settings" menu. For instructions, in the section entitled "MediaMVP menus", look at the **Settings** menu.

Note: the first time you enter a directory, it takes a long time (as long as several minutes) while thumbnail images are created. The next time you enter the directory, the response will be immediate. You can also turn off thumbnailing in the **Settings/Configuration** menu.

Page 10

6. Remote control

Power button: the Power button will bring the MediaMVP into a standby mode and will turn off the video output. It will not turn off the MediaMVP completely. When you press the Power button again, the MediaMVP will resume from standby and turn on its video output. If you want to reset MediaMVP, you need to remove the power plug for a few seconds, then reconnect it.

Go button: displays the Main menu. When in any menu, pressing the Go button will bring up the Main menu.

OK button: the OK button actions any menu or command that is currently selected.

Menu button: brings up the Sub menu. For example, when in the Music menu, pressing the Menu button will bring up the sub menu allowing the selection of Play all / Sort by date / Sort by name / Shuffle.

Back button: goes back to the previous menu. For example, if you have entered a directory and you'd like to return to the previous directory, press Back.

Pause button: will pause the music, video or slideshow currently playing. Press Play or Pause again to continue playing from where you left off.

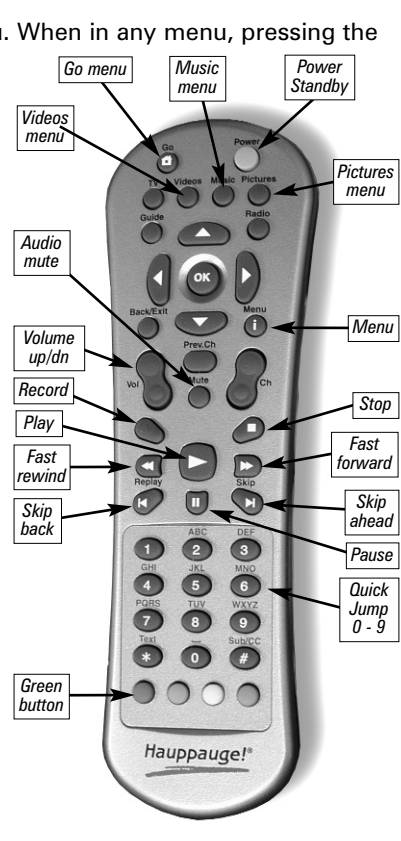
Vol- and Vol+ buttons: you can control the audio volume by using internal hardware in the MediaMVP. This means you can adjust the audio volume without having to use your TV sets' remote control.

Skip ahead and Skip back: the Skip buttons are used to skip 6 items ahead or backwards when in the media lists (music, videos and pictures) or when viewing pictures. When playing videos, Skip advances the video 30 seconds.

Quick Jump 0 to 9 buttons: When viewing lists of media, or when playing videos, the number keys moves to 10% when you press the '1' key, 20% when you press the '2' key, etc.

When viewing lists, the number buttons will move you to positions within the list. For example, if you are looking at a list of videos in the Music menu, pressing the "5" button will move you to 50% of the way through the list.

When watching a video, you can quickly skip through the video by pressing the 0-9 buttons. When you press one of these keys, you will skip to, for example, 10% of the video file when you press the '1' key, 20% of the video file when you press the '2' and so forth.



Page 7

7. MediaMVP menus

MediaMVP Main menu (the Go menu)

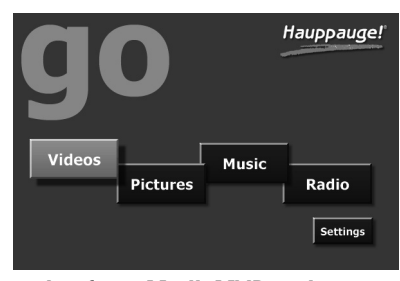
MediaMVP's main menu guides you to Music, Videos, Pictures and Radio. Also, through Settings, the user can navigate to media stored on their PC.

Note: Your PC must be running and both the PC and MediaMVP must be connected to the network before the Main menu will be displayed on your TV set.

Note: To access the Main menu at any point, press "Go" on the remote control.

Note: If you shut down "Power" button on your MediaMVP remote control, the next time you turn on MediaMVP by pressing the green "Power" button, MediaMVP should start within a minute.

Note: if you need to reboot MediaMVP, remove the power plug from MediaMVP, wait 5 seconds and plug it back in.



Music menu
The Music menu will show MP3 files, WMA audio or Music Playlists which are located in selected directories on your PC. You can play a music file (indicated by the music icon next to the file name) by either pressing the "Play" button or the "OK" button on the remote control.



To navigate to a sub menu (indicated by the 'folder' icon), move the cursor to the folder by using the arrow buttons on the Remote control and press the "OK" button on the remote.

Playlists are indicated by the 'playlist' icon. To play a playlist, simply move the cursor to a playlist and press "OK" on the remote control. Supported playlists are: M3U, PLS, B4S, and ASX.

If you press the "Menu" button on the remote control, a pop up menu will appear which will allow the sorting of the music by date or name, or a random order of music files. A "Play all" option is available, which will play all of the music located in the current directory.

To stop music, press the "Stop" button on the remote control. To mute music, press the "Mute" button on the remote control.

Page 12

Page 9

Note: Music playlists can also include video files, but you can only play a video playlist from a directory listed in Music.

Playing WMA audio files

To play WMA files (Windows Media Audio) with the MediaMVP, the installation of Windows Media Player 9 is required on the server PC. MediaMVP will not play encrypted WMA files (those files which use Windows DRM).

Playing a Picture Slideshow while listening to music

After selecting music, either an individual music title, a playlist or by using Play All, you can play Picture files by pressing the "Go" button on the remote control, move the cursor right to **Pictures**, and then entering the Pictures menu by pressing the "OK" button.

To mute the audio while watching a slideshow, press the "mute" button on the remote.

Creating music playlists

You can either automatically create playlists in an application such as Musicmatch, or you can manually create a playlist. If you want to create manual playlists, you can use either M3U or ASX files.

When playing a music playlist, the Skip button on the remote control will skip the current track and start playing the next track. Hitting one of the Quick Jump buttons on the remote (the 0 to 9 buttons) will move you to 10%, 20%, etc in your music playlist.

M3U is pretty simple to create. Here is an example. Just create the file in any text editor and save it into your music directory with an M3U extension.

```
C:\Documents and Settings\My Documents\My Music\Sara Mclachlan - Take your .mp3
C:\MyMusic\04-R.E.M. _ Everybody Hurts.mp3
C:\MyMusic\11-Bruce Hornsby & The Range _ The Way It Is.mp3
C:\MyMusic\06-Pink _ Family Portrait.mp3
Here is an example of an ASX playlist. Just create the file in any text editor and save it into your music directory with an ASX extension.
<ASX Version="3.0">
<ENTRY>
<REF HREF="C:\MyMusic\06-Pink _ Family Portrait.mp3"/>
</ENTRY>
<ENTRY>
<REF HREF="C:\Documents and Settings\My Documents\My Music\Sara Mclachlan - Take your .mp3"/>
</ENTRY>
<ENTRY>
<REF HREF="C:\MyMusic\04-R.E.M. _ Everybody Hurts.mp3"/>
</ENTRY>
<ENTRY>
<REF HREF="C:\MyMusic\11-Bruce Hornsby & The Range _ The Way It Is.mp3"/>
</ENTRY>
<ENTRY>
<REF HREF="C:\MyMusic\04-Avril Lavigne _ I'm With You.mp3"/>
</ENTRY>
</ASX>
```

Page 13

2. Add radio stations to the MediaMVP media list

Now we need to add the Internet Radio station directory to the MediaMVP media list so that the MediaMVP can "see" them. On your Windows screen, press **Start / Programs / Hauppauge MediaMVP** then **Search for Media**.

Under **Media Type**: choose **Radio Stations** and press on Search. After a few moments, you will see a list of directories on your local hard disks which have MediaMVP links to Internet Radio stations. Press on those directories you would like to have MediaMVP list on your TV set, press **Add** and then press on **Save**.



3. Playing an Internet radio station on the MediaMVP

Press the **Go button** on the MediaMVP remote. Press on the **Radio button**. If you have set up the directories (the paragraph above), you will see a **MyRadio** listing. Go to this directory. In the directory, you will see a list of Internet radio stations you have made links to.

To start playing an Internet radio station, use your remote control to **select the station** and then press the **Play** button.

Note: If you press OK on a radio station and the audio does not start within a few seconds, the radio station cannot be accessed by the MediaMVP. One reason for this is that this station cannot be accessed directly (it uses redirection to get to the station). Another reason might be that the radio station does not transmit audio in one of the formats MediaMVP can play (currently MP3 and WMA).

How the Internet radio stations are named, stored and played by the MediaMVP/wMVP:

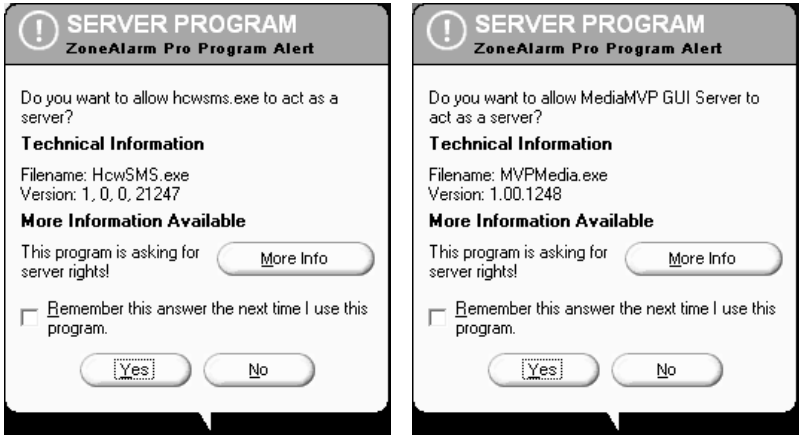
When you are browsing Internet radio stations while in Internet Explorer, and you right press on a link to an Internet radio station, the MediaMVP application running on the PC makes a note of the URL the link is pointing to. The **MVP Radio Station** pop up menu then is run, allowing you to name the link and also put the link into a category (for example: Jazz), and then a file is created in the My Radio directory with that name. The file extension is .MVP, and within the file is the URL of the radio station.

When you want to play a radio station, the MediaMVP application running on the PC opens that file, goes to the URL within the file and then streams the audio over your network to the MediaMVP, where the audio is then played out to your TV set.

If the file holds a link which is not valid (a link which does not directly point to an Internet radio station), then the MediaMVP radio software waits for about 1 minute before it senses that it cannot open the URL and find a radio station. MediaMVP will then return to the Radio menu.

ZoneAlarmPro Firewall

There are four firewall alert menus which pop up during the first use of MediaMVP. For each of these alerts, you should allow access by pressing **Yes**.



To avoid these warning messages from popping up each time you use MediaMVP, select **"Remember this answer"**. There are three MediaMVP services which will require access to your network: **Hcv6SMS.exe**, **MVPMedia.exe** and **MVPStart.exe**. Grant access to these programs.

Pictures menu

The Pictures menu will show JPG, JPEG, BMP or GIF files which are located in selected directories on your PC. You can play a picture file (indicated by the thumbnail of the picture) by either pressing the "Play" button or the "OK" button on the remote control.

To navigate to a sub menu (indicated by the 'folder' icon), move the cursor to the folder by using the arrow buttons on the Remote control and press the "OK" button on the remote.

If you press the "Menu" button on the remote control, a pop up menu will appear which will allow the sorting of the pictures by date or name, or a random order. "Play slideshow" will play a slideshow of all of the pictures located in the 13 current directory.



To return to the Pictures menu while viewing a picture, press the "Back" button on the remote control.

While running a slideshow, you can press "Pause" to pause the slideshow. Hit either "Pause" again or "Play" to resume the slideshow. When viewing pictures, the **Skip ahead** button on the remote control will move 6 pictures forward, while the **Skip back** button will skip back 6 pictures.

Videos menu

The Videos menu will show MPEG-1, MPEG-2 or DivX videos which are located in selected directories on the PC. You can play a video file (indicated by the video icon or the video thumbnail) by either pressing the "Play" button or the "OK" button on the remote control.

Types of video files supported are MPEG-1 and MPEG-2, from less than 1 Mbit/sec up to 8 Mbits/sec, or DivX movies. The maximum data rate might be limited by your local area network speed.

To navigate to a sub menu (indicated by the 'folder' icon), cursor to the folder by using the arrow buttons on the Remote control and press the "OK" button on the remote.



If you press the "Menu" button on the remote control, a pop up menu will appear which will allow the sorting of the videos by date or name, or a random order.

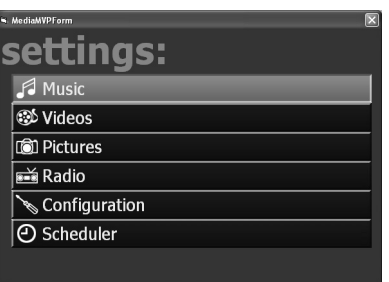
To return to the Video menu while watching a video, press the "Stop" button on the remote control.

Use the Quick Jump 0 to 9 buttons to quickly move through a video. When playing videos, the number keys moves to 10% when you hit the '1' key, 20% when you hit the '2' key, etc.

To fast forward through a video, press the remotes "Fast forward" button. To pause the video while playing, press the "Pause" button on the remote.

Settings menu

Directories for Music, Videos, Pictures and Internet radio
The Settings menu is where you can choose the directories on your PC where your Music, Video and Pictures media are stored. Also, the Settings menu has a Configuration menu where you can set the video format (NTSC or PAL), video size (4:3 or 16:9), and flicker reduction (none, low, medium, high) for your TV set.



When you enter the **Settings:Music**, **Settings:Video** or **Settings:Pictures** menus, you will see a listing of directories (such as **My Documents**) and drives (disk drives, floppy drives or CD-ROM drives) on your PC. To find media within a drive, scroll down to the directory (C:\ for example) and then press the OK button on your remote control. This will bring the contents of the selected directory onto your TV screen. To select subdirectories, scroll down to the subdirectory and hit the **OK** button. You will see if the media type you are looking for (music, videos, pictures) exists in the directory chosen by having any existing media listed.

To add a directory, hit the **green** button on the remote. If you would like to delete a directory from the list you see when entering Videos, Music or Pictures from the Main menu, hit the **red** button on the remote.

Configuration menu

Video thumbnails
In the Configuration menu, you can turn thumbnails on or off. Thumbnails are small images of your digital pictures or a small image taken from the first frame of a video when browsing through lists of Videos or Pictures. Thumbnails are only viewable if your PC is running Windows XP and has suitable MPEG decoders installed.

Note: if your PC slows down when viewing directories of Videos or Pictures, you should turn Thumbnails off.

Flicker filter

The flicker filter removes flickering which might appear on some TV sets when displaying text and pictures. High end TV sets can use the flicker filter turned off, while normal TV sets might look better if flicker filter is set to medium or high. There are four settings: off, low, medium, high.

FCC Statement

Radio Interference Statement:

The WinTV boards have been tested and found to comply with the limits for a Class B digital device, pursuant to part 15 of the FCC Rules. These limits are designed to provide reasonable protection against harmful interference in a residential installation. This equipment generates, uses, and can radiate radio frequency energy and cause harmful interference to radio communications. However, there is no guarantee that interference will not occur in a particular installation. If this equipment does cause harmful interference to radio or television reception, which can be determined by turning the equipment off and on, the user is encouraged to try to correct the interference by one or more of the following measures:

- reorient or relocate the receiving antenna.
- increase the separation between the equipment and receiver.
- connect the equipment into an outlet on a circuit different from that to which the receiver is connected.
- consult the dealer or an experienced radio/TV technician for help.

FCC ID: H90WINTV

CAUTION: Changes or modifications not expressly approved by the party responsible for compliance to the FCC Rules could void the user's authority to operate the equipment.

CE Statement: This equipment has been tested and complies with EN 55013, EN 55020 and IEC 801-3 part 3 standards.

To rewind through the video, press the "Rewind" button on the remote.

While playing videos, the audio volume can be adjusted through the **Vol+** and **Vol-** keys.

Tips for playing DivX videos

- simultaneous playback of DivX videos are not possible from multiple MediaMVPs
- DivX playback requires a 2.2 GHz processor or faster in your PC. If your PC is too slow to "transcode" the DivX video at its current frame size, video will stutter or you will lose lip synch as you watch your videos. One solution is to play smaller frame size DivX videos. For example, if you see jerky video or stuttering audio with 640x480 DivX videos, try playing 320x240 size DivX videos instead.
- MediaMVP can scale DivX videos up to full screen, but can only do this on videos of exactly 320x240 or 640x480. If your videos are another format, they will be "letterboxed" on your TV set.
- After using the Fast-Forward and Fast-Rewind buttons a loss of speech synchronization may occur.
- Your DivX videos need to have a .AVI file extension in their names
- Once DivX videos are playing, they will typically consume most of the CPU power available on your PC. Therefore, you should not expect to be able to do other tasks on your PC while playing DivX videos.
- In some case, you can have better result reading DivX by selecting NTSC output. Your TV set need to be NTSC compatible (see Settings menu section)

Radio menu

MediaMVP allows you to listen to Internet Radio stations through your TV set. MediaMVP accomplishes this by opening a special link on your PC to the Internet radio station, and then "streams" the internet audio over your home network to the MediaMVP, where the audio is output to the TV set. Note: your PC must be able to access the Internet.

To play an Internet radio station through the MediaMVP, the Internet radio station must do two things:

- it must transmit audio in either MP3 or in WMA formats. Some radio stations transmit using Real audio, which the MediaMVP cannot currently play.
- the Internet radio station must be accessible via a direct Internet link. In other words, you need to be able to put a URL in Internet Explorer and reach the Internet radio station directly without going through any levels of indirection. An example of a website which has direct links to Internet radio stations is Shoutcast.

Scheduling a WinTV recording from MediaMVP

MediaMVP has the ability to set up a scheduled recording using a Hauppauge WinTV in the PC server. This sets up a recording session using WinTV-Scheduler.

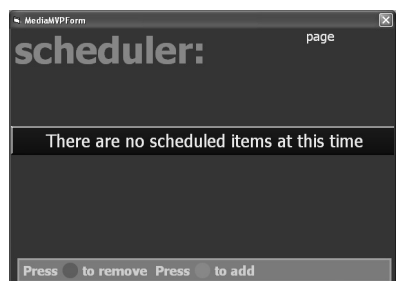
The format of the recording is set by the WinTV application. For example, if you have a WinTV-PVR-150 in your PC and want to record using DVD-LongPlay, you need to have set the WinTV application to record using DVD-LongPlay.

Here are the requirements to record:

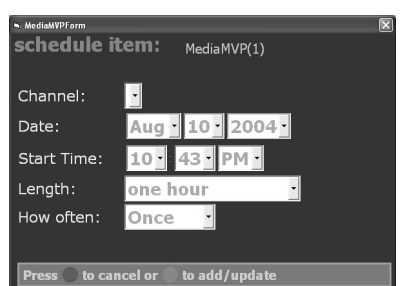
- your PC needs to have a WinTV product installed
- you need to have password permission to record on your PC
- your PC needs to have the WinTV-Scheduler installed

The MediaMVP scheduler can be found in the **Settings** menu. Go to **Settings:Scheduler**.

If you have no recordings scheduled, you will see a message "There are no scheduled recordings". Press the **green** button on your remote control to add a scheduled record item.



Use the arrow keys to move to the fields in "Schedule Item". When you are finished setting up your recording, press the **green** button on your remote.



Waste Electrical and Electronic Equipment (WEEE)

The device may not be disposed of with household rubbish. This appliance is labeled in accordance with European Directive 2002/96/EG concerning used electrical and electronic appliances (Waste Electrical and Electronic Equipment - WEEE). The guideline determines the framework for the return and recycling of used appliances as applicable throughout the EU. To return your used device, please use the return and collection systems available to you.

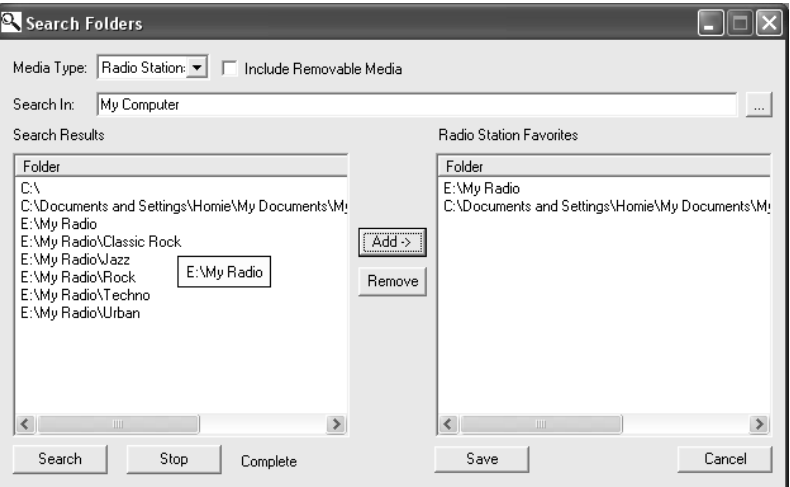
Here is how you can listen to Internet radio using MediaMVP:

1. Create a link to an Internet radio station on your PC
Open Internet Explorer and go to a page with Internet Radio stations. Shoutcast is one example: www.shoutcast.com

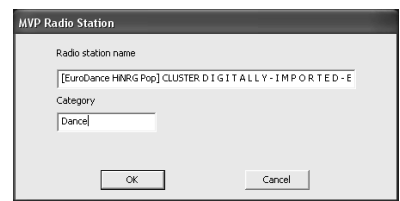
Remember: you must be selecting Internet radio stations which can be directly accessed by your browser (and not via a redirected URL). There are many Internet radio stations which do not allow a direct link to the station. These Internet radio stations cannot be played by MediaMVP



Choose an Internet Radio station or program and use your **RIGHT** mouse button to press on the button which allows you to listen to a station (for example, the **Tune In** button in **Shoutcast**). When you press your **RIGHT** mouse button, a Pop-Up Menu will appear. Choose **Add to MVP Favorite Radio Stations**.



A window will pop up entitled **MVP Radio Station**. You will be asked to enter **Radio station name**. You can do so if you like, or leave the default. You can also place the radio station in a category (you will see these categories on your TV set via the MediaMVP). When you are finished naming your radio station, press **OK**.



Troubleshooting

Video is jerky when watching over a wireless network:
The wMVP should be able to play "DVD Standard Play" videos (8Mbits/esc) smoothly over an 802.11G network. If your video is jerky, your network is not running at 802.11G. See **Tips on optimizing your wireless network for MediaMVP** for suggestions on improving your network speed.

MediaMVP does not display the Main menu:
In order to display the Main menu, MediaMVP needs to be able to "talk" to the PC which has the MediaMVP software installed.

There are several things which might cause the MediaMVP not to be able to "talk" to the PC:

- your PC is not turned on. MediaMVP requires the PC to be turned on to operate. Make sure your PC is not in standby mode.
- The network cable is not connected to either the PC or the MediaMVP.
- The network router is not turned on.
- The PC and MediaMVP are not on the same network segment. Make sure the PC and MediaMVP are connected to the same router, switch or hub.
- A firewall is running on your PC, and is not allowing the MediaMVP to access the PC.

MediaMVP does not respond to the remote control:
There are many reasons why the MediaMVP might not respond to remote control commands. Most times, this is due to the PC becoming busy executing a previous MediaMVP command.

If this happens, press the **green Power** button on the remote control. This will suspend any MediaMVP operations on the PC. If you then press the **green Power** button once more, MediaMVP will resume from the Go menu.

Accessing the Video menu takes several minutes (or more):
Thumbnails take a long time to generate, and might even stop your PC from operating if there is a video defect in one of the movies in your Videos directory. To solve this problem, turn **OFF video thumbnails** in **Settings/Configuration**.