

# Hauppauge!

## WinTV Media Center Kit Quick Installation Guide for Windows Vista Home Premium & Vista Ultimate

© 2007 Hauppauge Computer Works · QI-MCKIT-PCIE-V4.0-ENG · 2007/10/12

**Hauppauge Computer Works, Ltd.**  
10 Borough High Street  
Bank Chambers  
London, UK, SE1 9QQ  
www.hauppauge.co.uk

Tech Support: (+44) 0207 378 0202  
Telephone: (+44) 0207 378 1997  
Fax: (+44) 0207 357 9171  
support@hauppauge.co.uk

**Hauppauge Computer Works, Italia**  
Viale Giovanni da Ceremate 40  
I-20141 Milano, Italia  
www.hauppauge.it

Assistenza: (+39) 02 8489 3275  
Telephone: (+39) 02 8489 4747  
Fax: (+39) 02 8489 4177  
italyinfo@hauppauge.com

**Hauppauge Computer Works GmbH**  
Krefelder Str. 669  
D-41066 Mönchengladbach, Germany  
www.hauppauge.de

Tel.-Support: (+49) 02161 694 88 40  
Telefon: (+49) 02161 694 88 0  
Fax: (+49) 02161 694 88 15  
info@hauppauge.de

**Hauppauge Computer Works, Nordic**  
Holländargatan 22  
S-113 59 Stockholm, Sverige  
www.hauppauge.se

Tech support: (+46) 851 800 888  
Tel: (+46) 851 800 880  
Fax: (+46) 851 800 885  
support@hauppauge.se

**Hauppauge Digital Asia, Pte. Ltd.**  
Blk 1093, Lower Delta Road #04-05  
Tiong Bahru Industrial Estate  
Singapore 169204  
www.hauppauge.com.sg

Tech Support: (+65) 276 4412  
Telephone: (+65) 276 9163  
Fax: (+65) 276 9167

### Included with the WinTV MC-Kit

- The **WinTV-HVR-1200 MC** PCI-Express board, with a hybrid DVB-T/Analogue TV tuner with software MPEG encoder  
or
- The **WinTV-HVR-1700 MC** PCI-Express board, with a hybrid DVB-T/Analogue TV tuner with hardware MPEG encoder  
or
- The **WinTV-HVR-2200 MC** PCI-Express board, with dual hybrid DVB-T/analogue TV tuners and hardware MPEG encoders
- **Media Center Remote control transmitter** and two AA batteries
- **Media Center remote control receiver** box for USB
- **IR transmitter** cable
- **WinTV Installation CD-ROM**
- **WinTV for Media Center Quick Installation Guide** (this guide)

**Note:** The enclosed WinTV Installation CD-ROM also includes the WinTV applications, these are optional and are not needed to use the Media Center application.

### Installing for Windows Vista Media Center

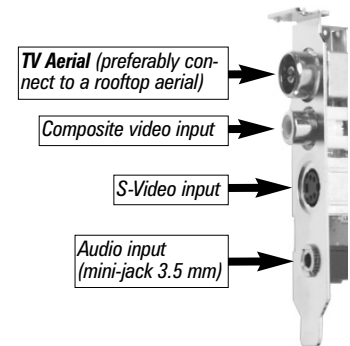
#### Installation overview

1. Install the WinTV board in your PC and connect the cables.
2. Install driver from WinTV Installation CD-ROM.
3. Install the Media Center remote control.
4. Begin setting up Media Center.

#### 1. Install the WinTV board in your Media Center PC and connect the cables

Turn the power off on your PC. Locate a free PCI-Express 1x slot and install the WinTV product. Plug your **TV antenna** into the TV Connector.

**Audio and video** from an external A/V device (satellite TV receiver, cable TV box, VCR, camcorder...) can be connected into the WinTV via the back panel connectors. If your A/V device uses **S-Video**, connect to the S-Video input on the WinTV. If your video device uses **composite video** instead of S-Video, use the yellow RCA jack. Audio input from an external A/V device can be connected into the WinTV via the **3.5mm mini-jack audio** input.



**Note:** Actual Layout of external connectors may vary, depending on your model.

#### 2. Install the WinTV Media Center driver

Start your computer and wait for Windows Vista to fully boot. Once done, cancel any 'Found new hardware wizards' you may see.

Insert your WinTV Installation CD-ROM, the installation window will automatically appear.

**Note:** If the autorun does not start, browse to the files on the disc, and double click on the file called 'Setup'.

In the installation window click on **Step 1: Install WinTV Drivers**.

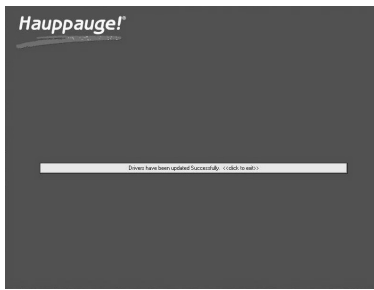


A blue screen will open which will begin installing and updating the drivers for your product.



Once complete click on the bar to exit, and then close the window.

**Note:** If you have a WinTV-HVR-1200 you will need to run Step 2 to install the MCE encoder which will allow the analogue tuner to be used in Media Center. If you have a WinTV-HVR-1700 or WinTV-HVR-2200 you do not need to run this step.



### 3a. Install the Media Center Remote control receiver

The Media Center remote control receiver box is a small USB device which receives remote control commands.

To install the Media Center remote control receiver, simply plug it into any USB port on your Media Center PC, Windows Vista will then automatically install the drivers for the USB receiver.

Insert now the 2 AA batteries into the Media Center Remote control transmitter.

To test the receiver, click the Start button in the middle of the remote control. Media Center should open.



### 3b. Install the Media Center IR blaster

If you have a satellite set top box and would like the Media Center remote control receiver/blaster to change channels on the set top box, plug one end of the IR transmitter cable into the back of the Media Center remote control receiver/blaster and position the other end (the transmitter end) over the IR receiver on your set top box. Then run the TV Set up under Media Center (see below).

### 4. Start up Media Center and begin setting up your TV signal.

Press the **Start** button in the middle of the remote to open Media Center.

On the main menu scroll down until you reach the Tasks menu, once there scroll left until you reach Settings, press **OK** on your remote to activate this menu.

From here scroll down and select **'TV'** then **'Setup TV Signal'**. You will then be guided through a wizard to set up the type of signal you wish Media Center to receive. Follow the on screen instructions for information on what to do from here.

## Troubleshooting

### Removing the WinTV Media Center driver

If you ever need to remove the WinTV driver, run HCWClean from the WinTV Installation CD-ROM. On Vista you must run HCWClean as Administrator.

### If you are unable to receive some or all DVB-T channels

We recommend using a roof top antenna when trying to receive digital channels, you may also need a signal booster depending on the reception in your area.

You can find more information about reception from our forum and support phone line.

## FCC Statement

### Radio Interference Statement:

WinTV have been tested and found to comply with the limits for a Class B digital device, pursuant to part 15 of the FCC Rules. These limits are designed to provide reasonable protection against harmful interference in a residential installation. This equipment generates, uses, and can radiate radio frequency energy and cause harmful interference to radio communications. However, there is no guarantee that interference will not occur in a particular installation. If this equipment does cause harmful interference to radio or television reception, which can be determined by turning the equipment off and on, the user is encouraged to try to correct the interference by one or more of the following measures:

- reorient or relocate the receiving antenna.
- increase the separation between the equipment and receiver.
- connect the equipment into an outlet on a circuit different from that to which the receiver is connected.
- consult the dealer or an experienced radio/TV technician for help.

**FCC ID:** H90WINTV

**CAUTION:** Changes or modifications not expressly approved by the party responsible for compliance to the FCC Rules could void the user's authority to operate the equipment.

**CE Statement:** This equipment has been tested and complies with EN 55013, EN 55020 and IEC 801-3 part 3 standards.

## Waste Electrical and Electronic Equipment (WEEE)

The device may not be disposed of with household rubbish. This appliance is labeled in accordance with European Directive 2002/96/EG concerning used electrical and electronic appliances (Waste Electrical and Electronic Equipment - WEEE). The guideline determines the framework for the return and recycling of used appliances as applicable throughout the EU. To return your used device, please use the return and collection systems available to you.